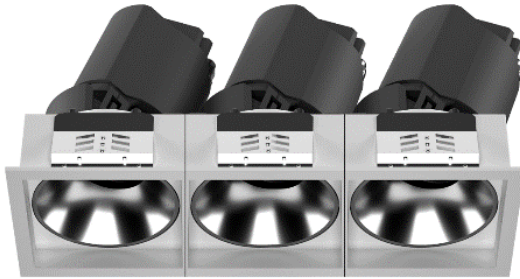
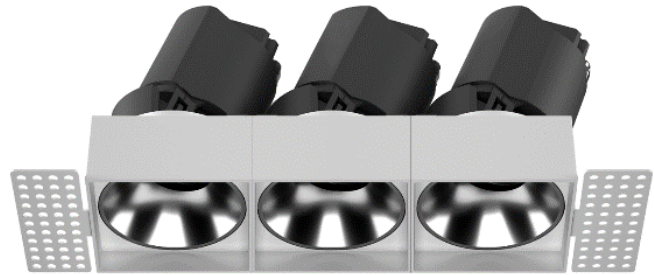


WALL WASHER DOWNLIGHT

WDW-3 / WDW-4 series



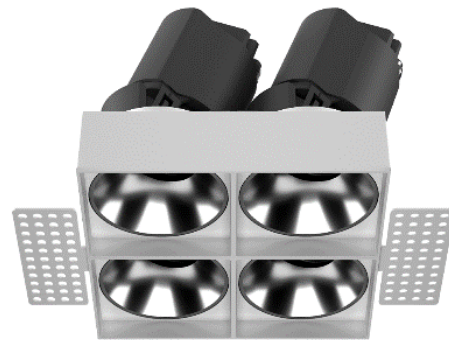
WDW-3QF



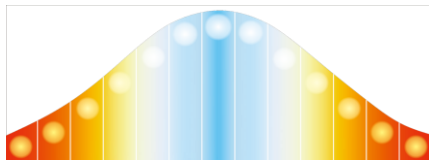
WDW-3QL



WDW-4QF



WDW-4QL



Circadian Lighting

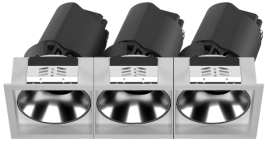
+



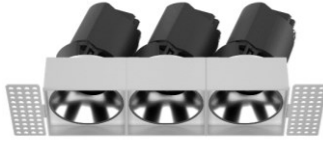
Tunable White

Products produced by
Circadian Lighting Limited
www.circaman.cc

WDW series



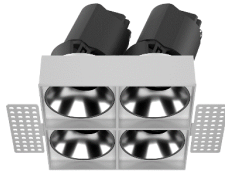
WDW-3RF



WDW-3RL



WDW-4QF



WDW-4QL

FEATURES 產品特點

- Circadian rhythm of light 2800K - 5700K during different time
- Dual Colours - Single point source LED
- Available in 5W – 20W for 25W – 100W halogen equivalent
- Tunable white and dimmable to 5%
- Selectable CCT - 2800K/3000K/3500K/4000K/4500K/5000K/5700K
- Transformer 100-240V 50/60Hz input (Sold separately)
- Android apps or optional 2.4GHz Wireless Remote Control
- Honeycomb louver accessory available
- 不同時間的晝夜節律燈光2800K - 5700K
- 雙色 - 單點光源 LED
- 5W – 20W燈具電源可選 · 相當於 25W – 100W 鹵素燈
- 可調白光及可調光至 5%
- 可選色溫 - 2800K/3000K/3500K/4000K/4500K/5000K/5700K
- 變壓器 100-240V 50/60Hz 輸入 (單獨出售)
- Android 應用程序或可選的 2.4GHz 無線遙控器
- 可提供蜂窩板配件

APPLICATIONS 應用

- Display, Hotel, Office, Residential, Restaurant, Retail, Speciality
- 展示、酒店、辦公室、住宅、餐廳、零售、其他

PRODUCT INFORMATION 產品資料

Colour temp.:	2800K – 5700K
色溫:	2800K – 5700K
CRI :	90 (Typ.) CRI 80 and 95 on request
顯色指數:	90 (Typ.) CRI 80 and 95 on request
Color Consistency:	3 Steps MacAdam @2800K and @5700K
顏色一致性:	3 Steps MacAdam @2800K and @5700K
Selectable CCT:	2800K / 3000K / 3500K / 4000K / 4500K / 5000K / 5700K
可選 CCT :	2800K / 3000K / 3500K / 4000K / 4500K / 5000K / 5700K
Brightness Setting:	100% / 75% / 50% / 25% / 10% / 5%
亮度設置:	100% / 75% / 50% / 25% / 10% / 5%
Beam Angle:	15° / 24° / 38° / 60°
光束角:	15° / 24° / 38° / 60°

Mode: A-Mode (Auto - CCT changing – Constant power 自動 - 色溫變化 - 恆定功率)

模式: C-Mode (Circadian Rhythm - CCT-brightness changing 晝夜節律 - 色溫亮度變化)

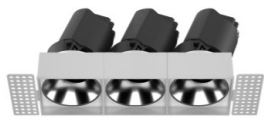
*CCT selection and Dimming functions by remote control or Android Apps
通過遙控器或 Android 應用程序選擇 CCT 和調光功能

**For informational purposes only. Content is subject to change
僅供參考。內容可能會需要更改。

WDW-3QF / 3QL / 4QF / 4QL series



WDW-3QF



WDW-3QL



WDW-4QF



WDW-4QL

Model No. 型號	Ceiling cut-out (mm) 開孔尺寸	Outer flange (mm) 外尺寸	Height (mm) 高度	Max. wattage (W) 最大瓦數	Lumen output (lm)* 輸出流明
WDW55-3QF	163 x 55	171 x 63.5	88	3 x 5W	921 - 1080 lm
WDW75-3QF	222 x 75	231.5 x 84.5	112	3 x 10W	1500 - 1770 lm
WDW95-3QF	284 x 95	293.5 x 104.5	138	3 x 20W	3390 - 3960 lm
WDW55-3QL	165.5 x 57.5	N/A	88	3 x 5W	921 - 1080 lm
WDW75-3QL	224.5 x 77	N/A	112	3 x 10W	1500 - 1770 lm
WDW95-3QL	287 x 97	N/A	138	3 x 20W	3390 - 3960 lm
WDW55-4QF	□108.5	□116	88	4 x 5W	1228 - 1440 lm
WDW75-4QF	□150	□158	112	4 x 10W	2000 - 2360 lm
WDW95-4QF	□190	□198	138	4 x 20W	4520 - 5280 lm
WDW55-4QL	□111	N/A	88	4x 5W	1228 - 1440 lm
WDW75-4QL	□152.5	N/A	112	4 x 10W	2000 - 2360 lm
WDW95-4QL	□192	N/A	138	4 x 20W	4520 - 5280 lm

ORDERING INFORMATION 訂購信息

Example Model 示例: WDW95-WT-SS-38D-928-957-4QF

LED Light-Engine Information 光引擎訂購信息							Mounting Information 安裝支架				
WDW	95	-	WT	-	WT	-	38D	-	928 - 957	-	4QF
Series 系列	Light Engine 光引擎	-	Body colour 鋁殼顏色	-	Reflector colour 反光罩顏色	-	Beam angle 光束角	-	CCT range 相對色溫範圍	-	Mounting Type 安裝支架
WDW	55 (Max. 5W) 75 (Max. 10W) 95 (Max. 20W)		WT White 白色		WT White 啞白 BK Black 啞黑 GB Gun Black 槍黑 SS Specular Silver 鏡面銀 GD Golden 金色		15D (15°) 24D (24°) 38D (38°) 60D (60°)		928 - 957 2800K - 5700K@90 CRI *(CRI 80 / 95 on request)		3QF (3 light-engines, rounded mounting with flange 三光引擎, 長方形帶 法蘭安裝支架) 3QL (3 light-engine, rounded mounting with flangeless 三光引擎, 長方形無邊安裝 支架) 4QF (4 light-engines, rounded mounting with flange 四光引擎, 方形帶法 蘭安裝支架) 4QL (4 light-engine, rounded mounting with flangeless 四光引擎, 方形無邊安裝 支架)

*For informational purposes only. Content is subject to change.
僅供參考。內容可能會更改。

*PSU is sold separately 電源單獨訂購