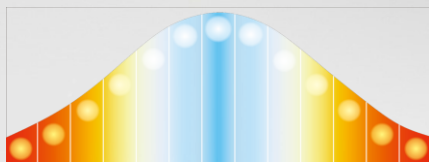
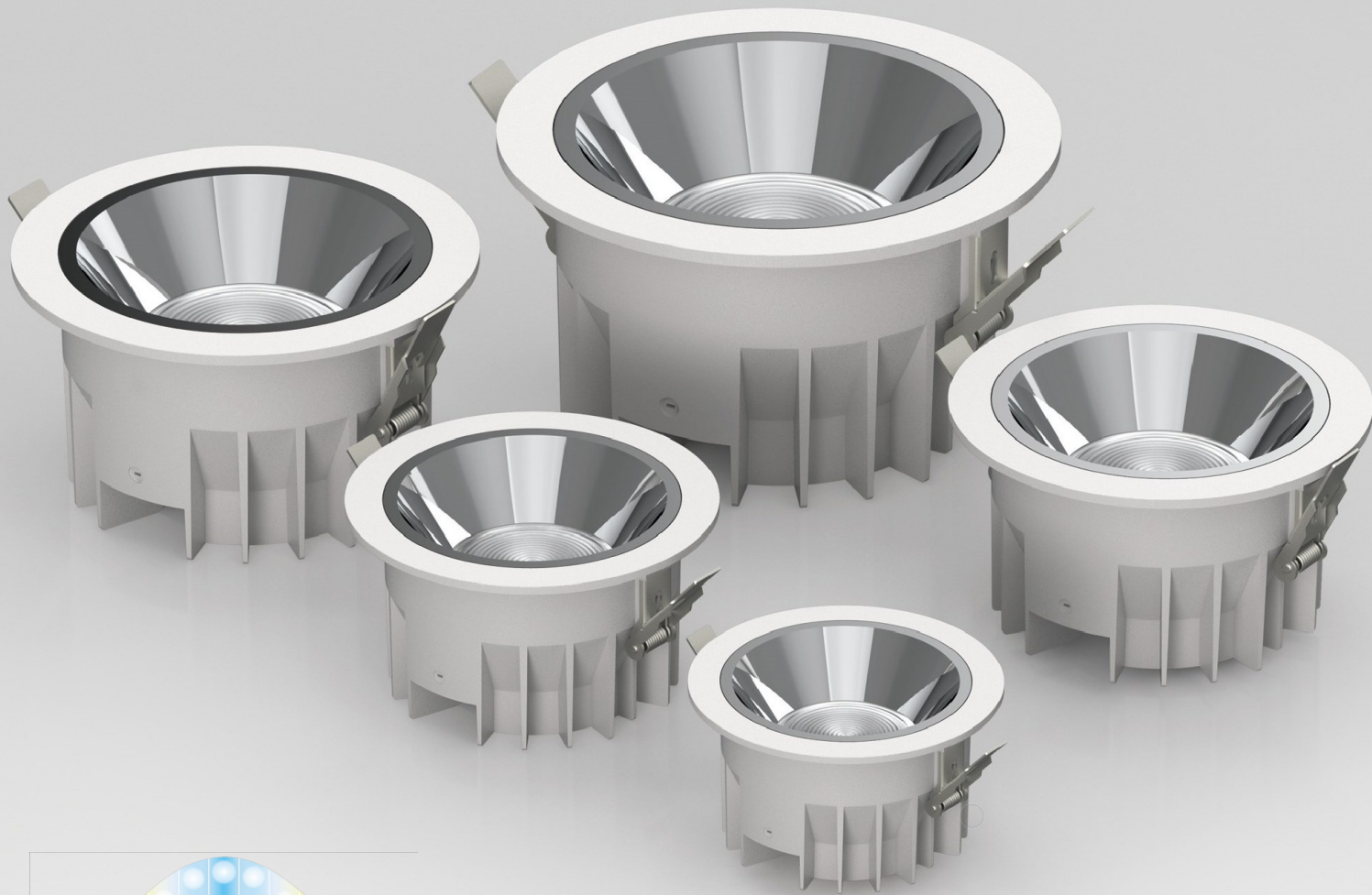


RECESSED DOWNLIGHT

RDE series



Circadian Lighting

+



Tunable White

Products produced by
Circadian Lighting Limited
www.circaman.cc

RDE series



FEATURES 產品特點

- Circadian rhythm of light 2800K - 5700K during different time
- Dual Colours - Single point source LED
- Available in 5W – 40W for 25W – 200W halogen equivalent
- Tunable white and dimmable to 5%
- Selectable CCT - 2800K/3000K/3500K/4000K/4500K/5000K/5700K
- Transformer 100-240V 50/60Hz input (Sold separately)
- Android apps or optional 2.4GHz Wireless Remote Control
- 不同時間的晝夜節律燈光2800K - 5700K
- 雙色 - 單點光源 LED
- 5W – 40W燈具電源可選 · 相當於 25W – 200W 鹵素燈
- 可調白光及可調光至 5%
- 可選色溫 - 2800K/3000K/3500K/4000K/4500K/5000K/5700K
- 變壓器 100-240V 50/60Hz 輸入 (單獨出售)
- Android 應用程序或可選的 2.4GHz 無線遙控器

APPLICATIONS 應用

- Display, Hotel, Office, Residential, Restaurant, Retail, Speciality
- 展示、酒店、辦公室、住宅、餐廳、零售、其他

PRODUCT INFORMATION 產品資料

Colour temp.:	2800K – 5700K
色溫:	
CRI :	90 (Typ.) CRI 80 and 95 on request
顯色指數:	
Color Consistency:	3 Steps MacAdam @2800K and @5700K
顏色一致性:	
Selectable CCT:	2800K / 3000K / 3500K / 4000K / 4500K / 5000K / 5700K
可選 CCT :	
Brightness Setting:	100% / 75% / 50% / 25% / 10% / 5%
亮度設置:	
Beam Angle:	60°
光束角:	

Mode: A-Mode (Auto - CCT changing – Constant power 自動 - 色溫變化 - 恆定功率)

模式: C-Mode (Circadian Rhythm - CCT-brightness changing 晝夜節律 - 色溫亮度變化)

*CCT selection and Dimming functions by remote control or Android Apps
通過遙控器或 Android 應用程序選擇 CCT 和調光功能

**For informational purposes only. Content is subject to change
僅供參考。內容可能會需要更改。

RDE series



Model No. 型號	Ceiling cut-out (mm) 開孔直徑	Outer diameter (mm) 外徑	Height (mm) 高度	Max. wattage (W) 最大瓦數	Lumen output (lm)* 輸出流明
RDE100	Ø100 - 105	Ø115	65	10W	570 – 660 lm
RDE125	Ø125 - 130	Ø140	80	20W	1130 – 1320 lm
RDE145	Ø145 - 150	Ø160	85	30W	1690 – 1980 lm
RDE180	Ø180 - 190	Ø198	98	30W	1740 – 2030 lm
RDE215	Ø215 - 220	Ø230	102	40W	2240 – 2620 lm

Lumen output with different wattage PSU (Power supply unit)
不同瓦數電源下的流明輸出

Model No. 型號	5W	10W	15W	20W	30W	40W
RDE100	320 – 374 lm	565 – 661 lm	N.A.	N.A.	N.A.	N.A.
RDE125	336 – 394 lm	640 – 749 lm	939 – 1098 lm	1129 – 1321 lm	N.A.	N.A.
RDE145	334 – 391 lm	659 – 771 lm	960 – 1123 lm	1233 – 1443 lm	1694 – 1982 lm	N.A.
RDE180	343 – 401 lm	666 – 780 lm	974 – 1140 lm	1238 – 1448 lm	1737 – 2032 lm	N.A.
RDE215	342 – 400 lm	667 – 780 lm	979 – 1145 lm	1268 – 1484 lm	1790 – 2095 lm	2238 – 2618 lm

*Lumen output at CCT2800K – CCT5700K. Data for reference only.

*CCT2800K – CCT5700K 下的流明輸出。數據僅供參考。

ORDERING INFORMATION 訂購資料

Example Model 示例: RDE100-WT-SS-60D-928-957

RDE	100	-	WT	-	SS	-	60D	-	928 - 957
Series 系列	Ceiling cut-out 開孔直徑	-	Body colour 鋁殼顏色	-	Reflector colour 反光罩顏色	-	Beam angle 光束角	-	CCT range 相對色溫範圍
RDE	100 100-105mm (Max. 10W)		WT White 白色		SS Specular Silver 鏡面銀		60D (60°)		928 – 957 2800K – 5700K@90 CRI *(CRI 80 / 95 on request)
	125 125-130mm (Max. 20W)				DG Dark Gold 黑金				
	145 145-150mm (Max. 30W)								
	180 180-190mm (Max. 40W)								
	215 215-220mm (Max. 40W)								

*For informational purposes only. Content is subject to change.
僅供參考。內容可能會更改。

**PSU is sold separately 電源單獨訂購