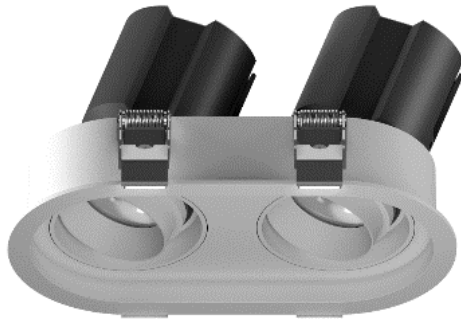


GIMBAL DOWNLIGHT

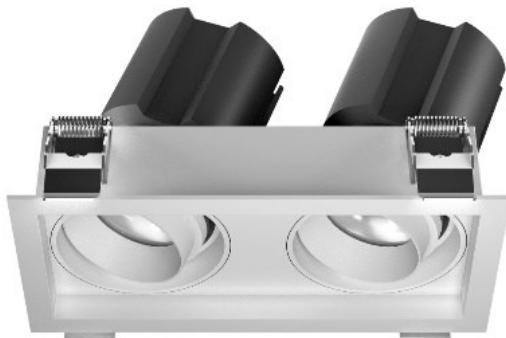
GDS-2 series



GDS-2RF



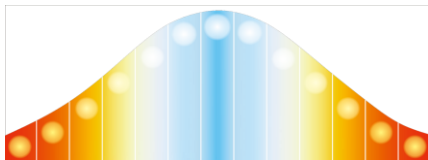
GDS-2RL



GDS-2QF



GDS-2QL



Circadian Lighting

+



Tunable White

GDS series



GDS-2RF



GDS-2RL



GDS-2QF



GDS-2QL

FEATURES 產品特點

- Circadian rhythm of light 2800K - 5700K during different time
- Dual Colours - Single point source LED
- Available in 5W – 20W for 25W – 100W halogen equivalent
- Tunable white and dimmable to 5%
- Selectable CCT - 2800K/3000K/3500K/4000K/4500K/5000K/5700K
- Transformer 100-240V 50/60Hz input (Sold separately)
- Android apps or optional 2.4GHz Wireless Remote Control
- Honeycomb louver accessory available
- 不同時間的晝夜節律燈光2800K - 5700K
- 雙色 - 單點光源 LED
- 5W – 20W燈具電源可選 · 相當於 25W – 100W 鹵素燈
- 可調白光及可調光至 5%
- 可選色溫 - 2800K/3000K/3500K/4000K/4500K/5000K/5700K
- 變壓器 100-240V 50/60Hz 輸入 (單獨出售)
- Android 應用程序或可選的 2.4GHz 無線遙控器
- 可提供蜂窩板配件

APPLICATIONS 應用

- Display, Hotel, Office, Residential, Restaurant, Retail, Speciality
- 展示、酒店、辦公室、住宅、餐廳、零售、其他

PRODUCT INFORMATION 產品資料

Colour temp.:	2800K – 5700K
色溫:	
CRI:	90 (Typ.) CRI 80 and 95 on request
顯色指數:	
Color Consistency:	3 Steps MacAdam @2800K and @5700K
顏色一致性:	
Selectable CCT:	2800K / 3000K / 3500K / 4000K / 4500K / 5000K / 5700K
可選 CCT :	
Brightness Setting:	100% / 75% / 50% / 25% / 10% / 5%
亮度設置:	
Beam Angle:	15° / 24° / 38° / 60°
光束角:	

Mode: A-Mode (Auto - CCT changing – Constant power 自動 - 色溫變化 - 恆定功率)

模式: C-Mode (Circadian Rhythm - CCT-brightness changing 晝夜節律 - 色溫亮度變化)

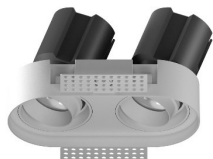
*CCT selection and Dimming functions by remote control or Android Apps
通過遙控器或 Android 應用程序選擇 CCT 和調光功能

**For informational purposes only. Content is subject to change
僅供參考。內容可能會需要更改。

GDS-2RF / 2RL / 2QF / 2QL series



GDS-2RF



GDS-2RL



GDS-2QF



GDS-2QL

Model No. 型號	Ceiling cut-out (mm) 開孔尺寸	Outer flange (mm) 外尺寸	Height (mm) 高度	Max. wattage (W) 最大瓦數	Lumen output (lm)* 輸出流明
GDS55-2RF	126 x 65	139.5 x 78.5	85	2 x 5W	614 - 720 lm
GDS75-2RF	177.5 x 88	193.8 x 104.3	112	2 x 10W	1000 - 1180 lm
GDS95-2RF	223 x 109	238.5 x 124.5	139	2 x 20W	2260 - 2640 lm
GDS55-2RL	128.5 x 67.5	N/A	85	2 x 5W	614 - 720 lm
GDS75-2RL	180 x 90.5	N/A	112	2 x 10W	1000 - 1180 lm
GDS95-2RL	225 x 111	N/A	139	2 x 20W	2260 - 2640 lm
GDS55-2QF	120 x 60	129.5 x 68.5	85	2 x 5W	614 - 720 lm
GDS75-2QF	164 x 77	180 x 90.5	112	2 x 10W	1000 - 1180 lm
GDS95-2QF	207 x 95	223.5 x 109.5	139	2 x 20W	2260 - 2640 lm
GDS55-2QL	120 x 62	N/A	85	2 x 5W	614 - 720 lm
GDS75-2QL	166.5 x 79.5	N/A	112	2 x 10W	1000 - 1180 lm
GDS95-2QL	209 x 97	N/A	139	2 x 20W	2260 - 2640 lm

ORDERING INFORMATION 訂購信息

Example Model 示例: GDS95-WT-WT-38D-928-957-2RF

LED Light-Engine Information 光引擎訂購信息							Mounting Information 安裝支架				
GDS	95	-	WT	-	WT	-	38D	-	928 - 957	-	2RF
Series 系列	Light Engine 光引擎	-	Body colour 鋁殼顏色	-	Reflector colour 反光罩顏色	-	Beam angle 光束角	-	CCT range 相對色溫範圍	-	Mounting Type 安裝支架
GDS	55 (Max. 5W) 75 (Max. 10W) 95 (Max. 20W)		WT White 白色		WT White 白色		15D (15°) 24D (24°) 38D (38°) 60D (60°)		928 - 957 2800K - 5700K@90 CRI *(CRI 80 / 95 on request)		2RF (2 light-engines, rounded mounting with flange 雙光引擎,圓形帶法蘭安裝支架) 2RL (2 light-engine, rounded mounting with flangeless 雙光引擎,圓形無邊安裝支架) 2QF (2 light-engines, rounded mounting with flange 雙光引擎,長方形帶法蘭安裝支架) 2QL (2 light-engine, rounded mounting with flangeless 雙光引擎,長方形無邊安裝支架)

*For informational purposes only. Content is subject to change.
僅供參考。內容可能會更改。

*PSU is sold separately 電源單獨訂購