

06:00

07:00

08:00

09:00

10:00

11:00

12:00

13:00

14:00

15:00

16:00

17:00

18:00

Connected by

WIZ

**2024
PRODUCT CATALOGUE**

Content and Product overview

P.4 What is Wiz ?

Wiz

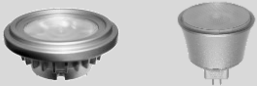
P.6 Product features and benefits

P.8 Product information

Connected by
Wiz



P.10 Professional spot lamps



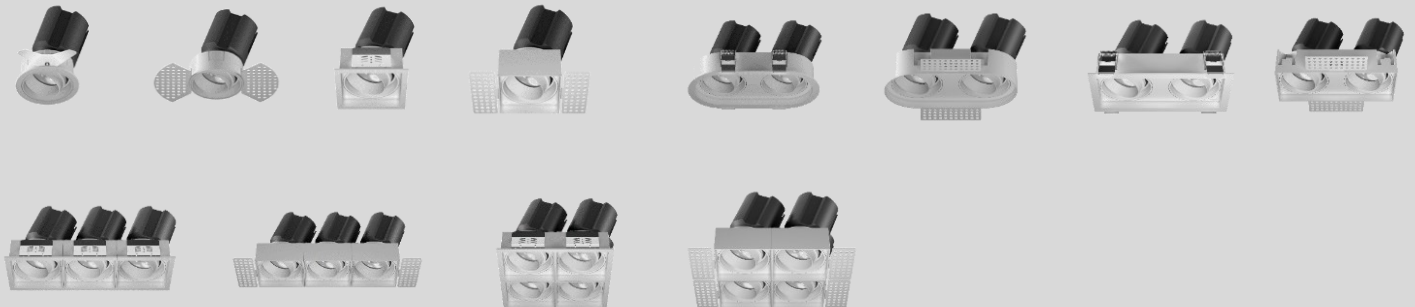
P.16 Track light



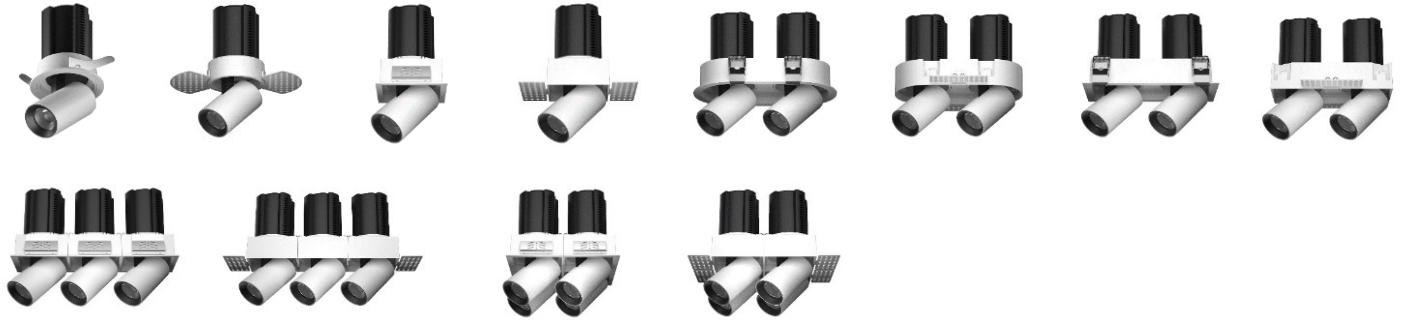
P.22 Recessed downlight



P.30 Gimbal downlight



P.36 Gimbal downlight (Extendable)



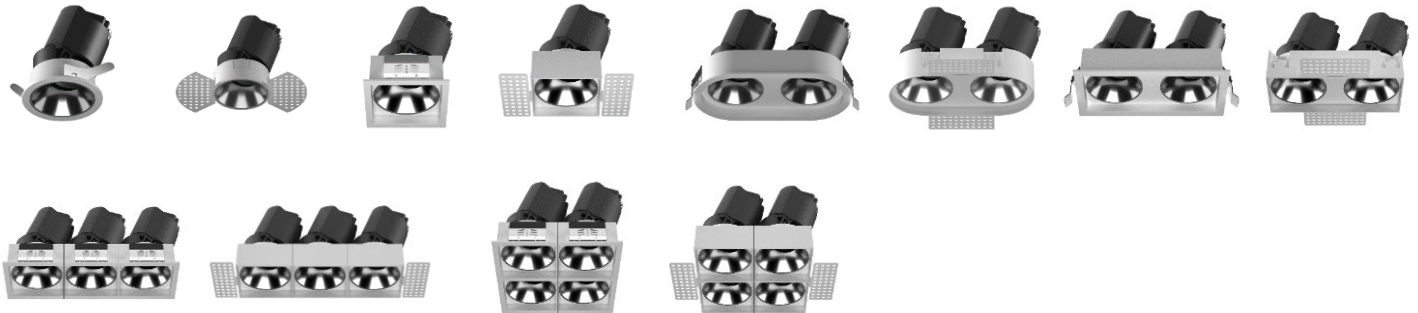
P.44 Gimbal downlight



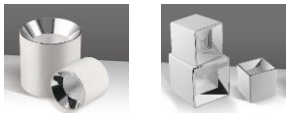
P.48 Wall washer downlight (Polarized)



P.52 Wall washer downlight



P.58 Surface mount downlight



P.62 Transformer and luminaries PSU and Wireless Panel



What is Wiz ?



Wiz is a connected lighting system. Wiz lights are set-up through your Wi-Fi network and can be controlled with the Wiz application on your iOS or Android phone and tablet, with the Wizmote remote control or with your traditional power switch thanks to the Wizclick feature.

Additionally, you can schedule the behavior of your lights, for example to follow your routines or to simulate presence.

* Source: www.wizconnected.com



ALWAYS THE RIGHT MOOD



ALL IN THE FAMILY

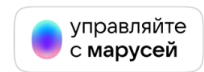


SAY THE MAGIC WORD

You can also now use Amazon Alexa or Google Home to control your lights with the power of your voice. Voice control is a new feature allowing you to connect your Amazon Echo or Google Home devices to your WiZ home, and simply speak to control your lights.

By recently interfacing with IFTTT you can now connect tons of features to your lights, such as the GPS of your phone, your favorite Weather app, or any other IFTTT connected device.

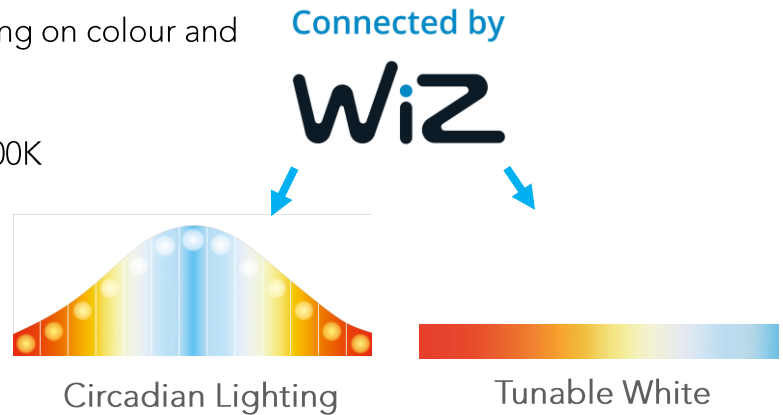
WiZ COMPATIBLE PARTNERS



Product features and benefits

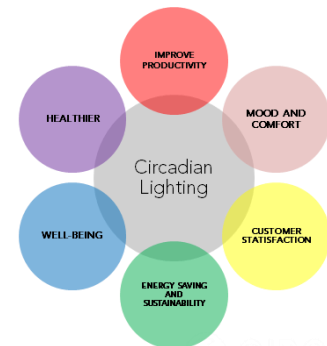
Product Features

- Wiz connected
- Circadian Light source from 2800K to 6000K
- Automatic smooth transition colour tuning on colour and brightness.
- Tunable White light setting 2800K to 6000K
- Dual Colours - Single Point source LED



Benefits

- Increase productivity - Higher visual acuity, improve concentration, faster cognitive processing
- Healthier - Stronger immune system, Improve metabolism, blood pressure, heart rate and body temperature
- Well-being - Improve emotional wellbeing and mood, Reduce fatigues and reduce hyperactivity
- Mood and Comfort - Provide more nature and comfortable environment
- Customer Satisfaction - Boost customer dwell time and increase customer satisfaction, generate more sales



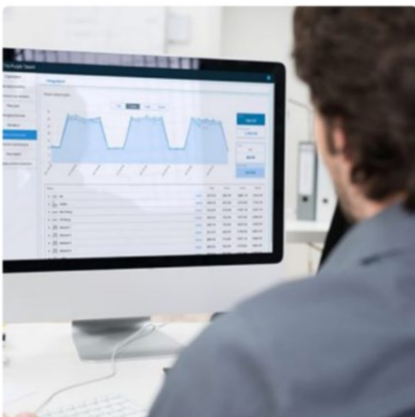


Easy commissioning

Complicated wiring is now a thing of the past. Save time with the WiZ Pro Setup app for direct effortless and wireless commissioning, even when the on-site Wi-Fi is not installed yet.

APP control

Once the lighting installation is connected to Wi-Fi, end users can control the lights from anywhere with the WiZ app. Customise your lighting to fit your application or choose between a variety of pre-designed light modes for a rich experience.



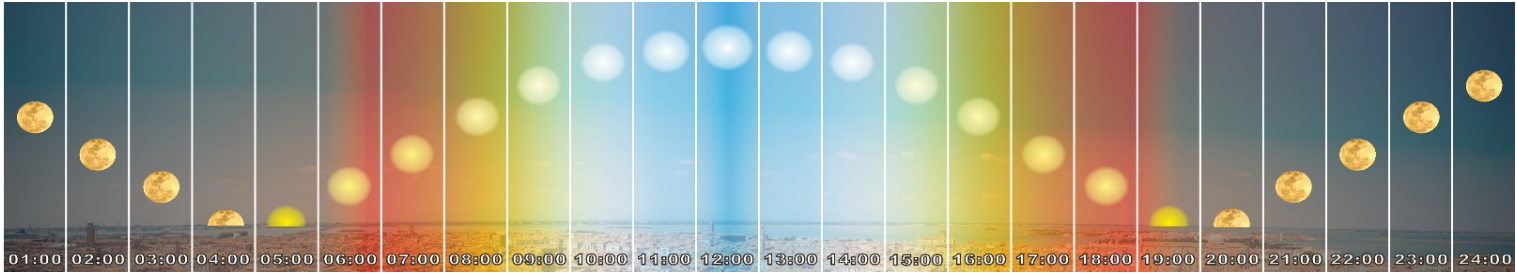
Advanced facilities management

Once the installation is connected to Wi-Fi, WiZ Pro Dashboard goes even further by allowing lighting installation control and remote site management. Get actionable light insights and monitoring with a clear overview of the entire installation.

* Source: www.wizconnected.com

What is Circadian Lighting?

- The secret to a healthy and happy life lies within your circadian rhythm, or internal biological clock, a 24-hour internal clock, with day and night.
- Circadian lighting allows you to regain control of your internal clock by adjusting the exposure to artificial light and making it work for you.
- Circadian lighting can help realign your sleep-wake cycle, aiding with deeper sleep and promoting overall long-term health. Improve productivity. Disrupting this cycle frequently has many adverse health effects and may be adding to your stress or health issues.



Product information

GENERAL PRODUCT INFORMATION

Colour temp.: Tunable White: 2800K - 6000K RGBCW: RGB+ WW = 2700K + CW = 6500K

CRI : 90 (Typ.) CRI 80 and 95 on request

Color Consistency: 3 Steps MacAdam

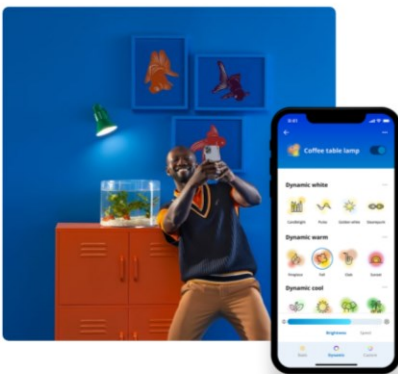
Selectable CCT: Tunable White: 2800K - 6000K RGBCW: 2200K - 6500K

Brightness Setting: 100% - 10%

Standard Warranty: 3 yrs

Features: Rhythm, Schedule, Room, Grouping, SPACESENSE, APPS control, 2.4GHz and Wi-fi connect

APPS: iOS, Android, PC



FIND THE RIGHT LIGHT

We've created beautiful preset light modes for everyday situations. Or choose from over 16 million colours. With Wiz, finding the one right light is always effortless.



**For informational purposes only. Content is subject to change

* Source: www.wizconnected.com

LOW VOLTAGE SPOT LAMP

AR111 series



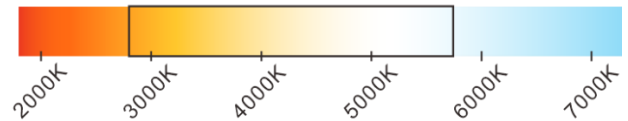
AR111 series

GENERAL SPECIFICATIONS

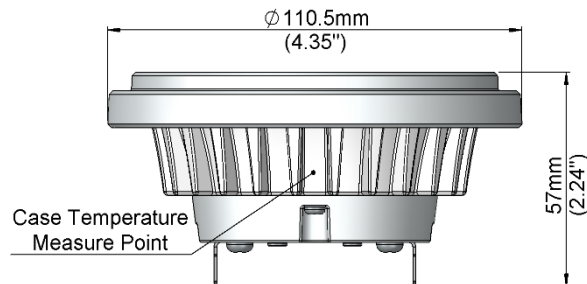
Gap Base	G53	Dimensions	Ø111mm x 57mm H
Working Voltage	12V AC/DC	Weight	280g
Halogen Equivalent	50W - 100W	Lifetime	35000 hrs - 50000 hrs (nom.)
Wattage	13 / 110W	Switching	50000x
Frequency	50/60Hz (12VAC)	Operation Temp. 70°C (nom.) to 80°C @ Case Temperature	
EU RoHS compliant	YES	Max. operation temp. 90°C @ Case Temperature	

PRODUCT INFORMATION

Colour temp.	2800K - 5700K
CRI	90 (Typ.) CRI 80 and 95 on request
Color Consistency	3 Steps MacAdam @2800K and @5700K
Brightness Setting:	100% ~ 5%
Beam Angle	10° / 15° / 24° / 38° / 10° x 60° / 30° x 60°

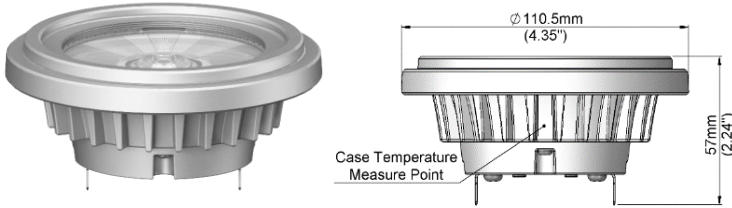


PRODUCT DIMENSIONS



*For informational purposes only. Content is subject to change.

AR111 series



Model No.	Halogen Equivalent	Wattage (W)	Lumen output (lm)*
AR111-18	75 - 100W	110W (Typ.)	925 - 1085 lm
AR111-12	50 - 75W	12W (Typ.)	620 - 700 lm

ORDERING INFORMATION

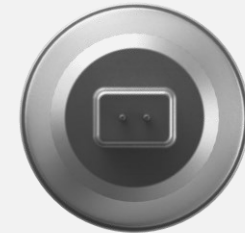
Example Model : AR111-18-38D-928-957-01

AR111	-	18	-	15D	-	928 - 957	-	02	-	
Product and Lamp Base	-	Wattage (W)	-	Beam angle	-	CCT range	-	Version	-	Voltage (optional)
AR111 For AR111-G53 (12V AC/DC)		18 (Typ. 110W)		10D (10°) 15D (15°) 24D (24°)		928 - 957 2800K - 5700K@90 CRI *(CRI 95 on request)		01 Gen.1 RF 2.4GHz		For AR111GU10 only TBC
AR111GU For AR111-GU10 (AC 100 ~ 240V) (coming soon)		13 (Typ. 20W)		38D (38°) 1060D (10°x60°) 3060D (30°x60°)				02 Wiz connected (coming soon)		

*For informational purposes only. Content is subject to change.

LOW VOLTAGE SPOT LAMP

MR16 series



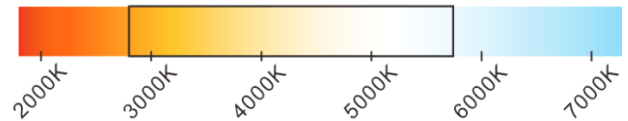
MR16 series

GENERAL SPECIFICATIONS

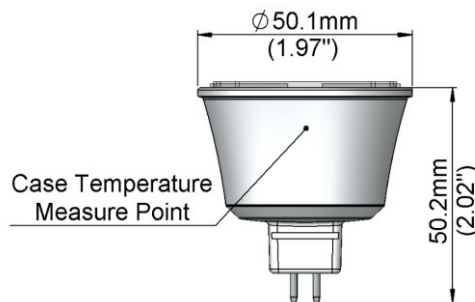
Gap Base	GU-5.3	Dimensions	Ø50.1mm x 50.2mm H
Working Voltage	12V AC/DC	Weight	60g
Halogen Equivalent	35W - 50W	Lifetime	35000 hrs - 50000 hrs (nom.)
Wattage	12 / 110W	Switching	50000x
Frequency	50/60Hz (12VAC)	Operation Temp. 70°C (nom.) to 80°C @ Case Temperature	
EU RoHS compliant	YES	Max. operation temp. 90°C @ Case Temperature	

PRODUCT INFORMATION

Colour temp.	2800K - 5700K
CRI	90 (Typ.) CRI 80 and 95 on request
Color Consistency	3 Steps MacAdam @2800K and @5700K
Brightness Setting:	100% ~ 5%
Beam Angle	10° / 15° / 24° / 38° / 10° x 60° / 30° x 60°

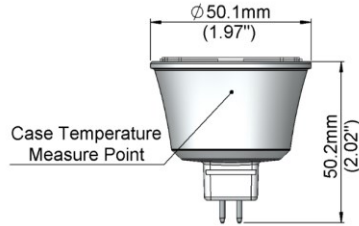


PRODUCT DIMENSIONS



*For informational purposes only. Content is subject to change.

MR16 series



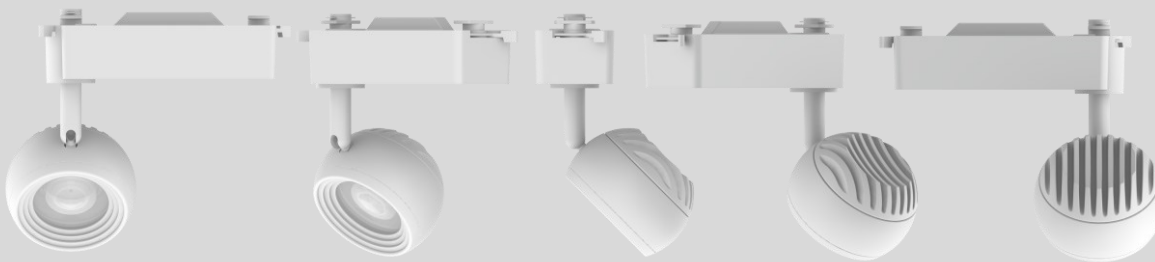
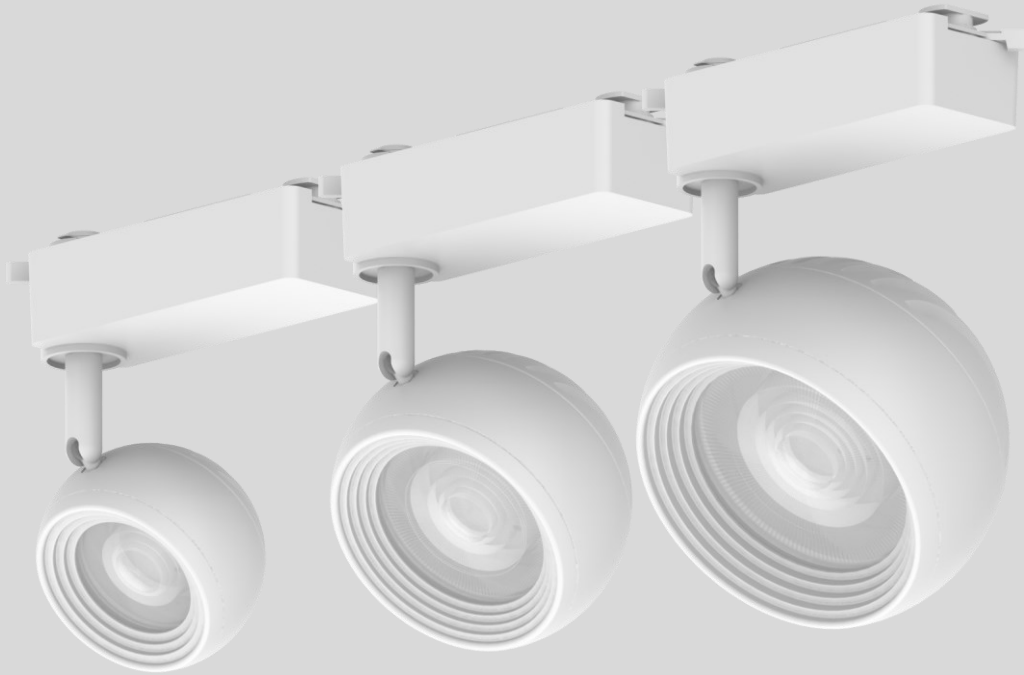
Model No.	Halogen Equivalent	Wattage (W)	Lumen output (lm)*
MR16-07	35 - 50W	6.10W (Typ.)	362 - 424 lm

ORDERING INFORMATION

Example Model : MR16-07-38D-928-957-01

Product and Lamp Base	Wattage (W)	Beam angle	CCT range	Version	Voltage (optional)
MR16 For MR16-GU5.3 (12V AC/DC)	07 (Typ. 6.10W)	10D (10°) 15D (15°) 24D (24°)	928 - 957 2800K - 5700K@90 CRI *(95 on request)	01 Gen.1 RF 2.4GHz	For MR16GU10 only TBC
MR16GU For MR16-GU10 (AC 100 ~ 240V) (coming soon)		38D (38°) 1060D (10°x60°) 3060D (30°x60°)		02 Wiz connected (coming soon)	

*For informational purposes only. Content is subject to change.



Connected by

WiZ

TLA series



Model No.	Driver box length (mm)	Light engine diameter (mm)	Max. Height (mm)	Max. wattage (W)	Lumen output (lm)*
TLA80	155	∅80	160	10W	690 - 820 lm
TLA105	155	∅105	185	20W	1130 - 1320 lm
TLA130	165	∅130	205	40W	2240 - 2620 lm

Model No.	10W	20W	40W
TLA80	690 - 820 lm	N.A.	N.A.
TLA105	NA	1130 - 1320 lm	N.A.
TLA130	NA	NA	2240 - 2620 lm

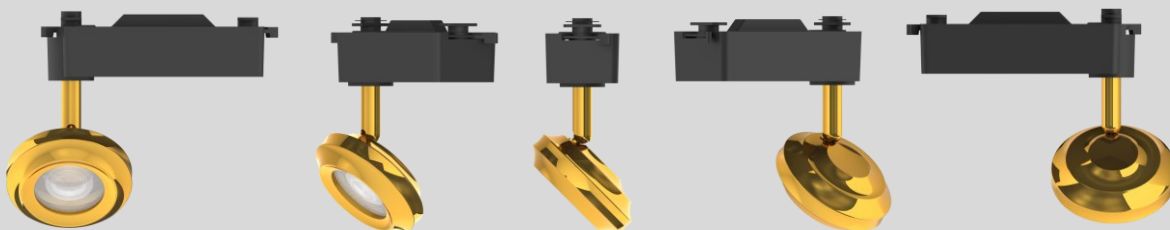
*Lumen output at CCT 2800K - 6000K. Data for reference only.

ORDERING INFORMATION

Example Model : TLA105-20-WT-WTSS-60D-928-960

TLA	105 - 20	-	WT	-	WT	-	24D	-	928 - 960	-	2P		
Series	Light engine diameter	-	Wattage	-	Driver box colour	-	Body colour	-	Beam angle	-	LED colour	-	Track adapter
TLA	80 - 10 (∅80mm, 10W)		WT White		WT White		12D (12°)		928 - 960 Tunable white 2800K - 6000K @90 CRI		2P (2 poles track adapter)		
	105 - 20 (∅105mm, 20W)		BK Black		BK Black		24D (24°)					3P (3 poles track adapter)	
	130 - 40 (∅130mm, 40W)						38D (38°)						
							60D (60°)		RGBCW RGB + CW=6500K + WW=2700K *(coming soon)				

*For informational purposes only. Content is subject to change.



Connected by

WIZ

TLC series



Model No.	Driver box length	Light engine diameter	Max. Height (mm)	Max. wattage (W)	Lumen output (lm)*
TLU80	155	Ø80	160	10W	460 - 530 lm
TLU105	155	Ø105	185	12W	750 - 860 lm
TLU130	155	Ø130	205	20W	1020 - 1200 lm

Model No.	10W	12W	110W
TLU80	460 - 530 lm	N.A.	N.A.
TLU105	NA	750 - 860 lm	N.A.
TLU130	NA	NA	1020 - 1200 lm

*Lumen output at CCT 2800K - 6000K. Data for reference only.

ORDERING INFORMATION

Example Model : TLU105-12-BK-GP-24D-928-957-3P

TLU	105 - 12	-	WT - CP	-	24D	-	928 - 960	-	2P
Series	Light engine diameter - Wattage	-	Driver box colour - Body colour	-	Beam angle	-	CCT range	-	Track adapter
TLU	80 - 08 (Ø80mm, 10W) 105 - 15 (Ø105mm, 15W) 130 - 18 (Ø130mm, 20W)		WT - CR White - Chrome Plated BK - GP Black - Glit Plated		12D (12°) 24D (24°) 38D (38°) 60D (60°)		928 - 960 Tunable white 2800K - 6000K @90 CRI RGBCW RGB + CW=6500K + WW=2700K *(coming soon)		2P (2 poles track adapter) 3P (3 poles track adapter)

*For informational purposes only. Content is subject to change.



TLT series



Model No.	Outer dimension (mm)	Height (mm)	Max. wattage (W)	Lumen output (lm)*
TLT70	Ø71	127	20W	730 - 850 lm

*Lumen output at CCT 2800K- 6000K. Data for reference only.

ORDERING INFORMATION

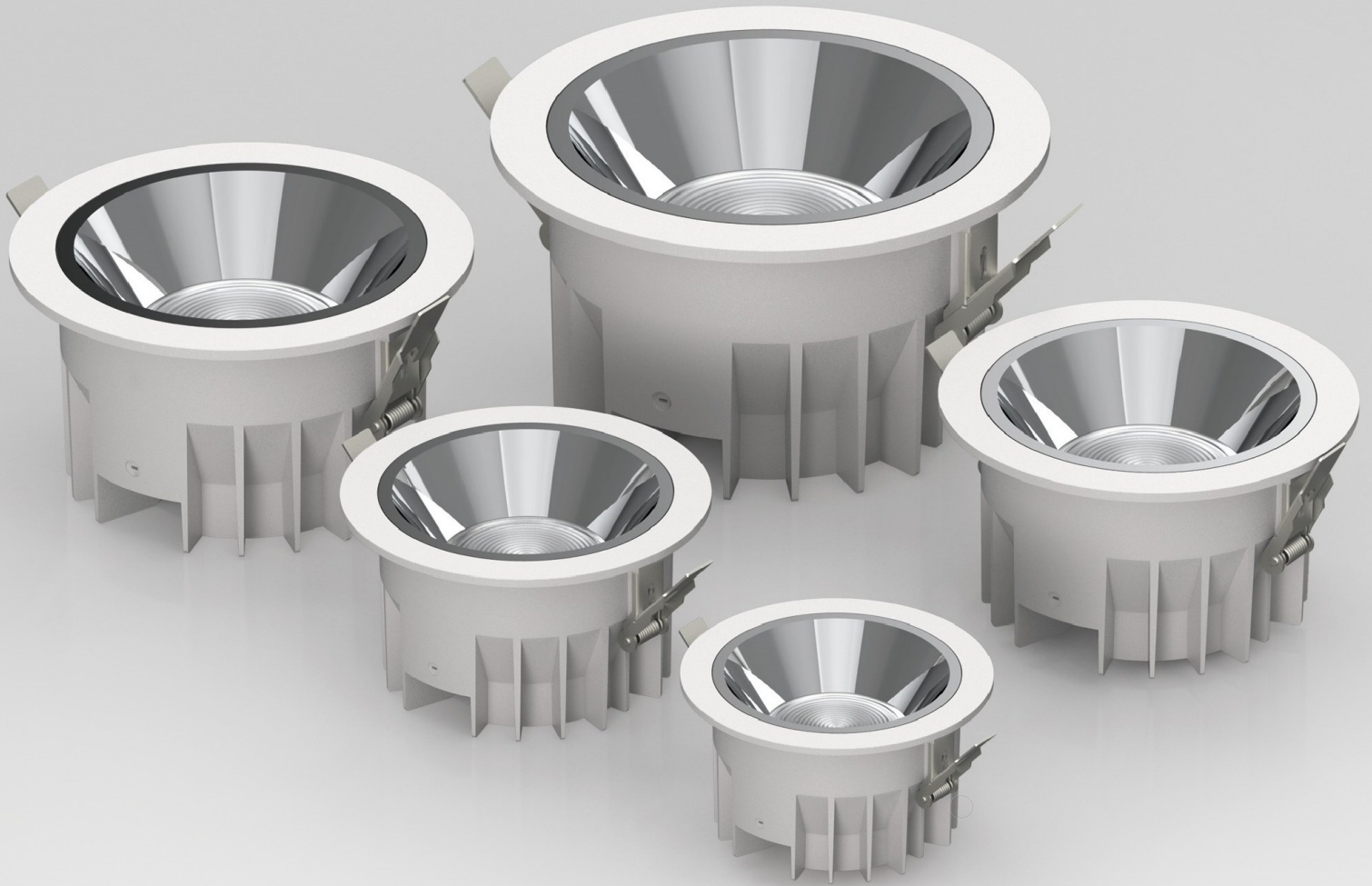
Example Model : TLT70-15-WT-BK-1550D-928-960-2P

Series	Outer diameter	Wattage	Driver box colour	Body colour	Beam angle	CCT range	Track adapter
TLT	70 (71mm)	13	WT White BK Black	- WT White BK Black	15D-50D (15° - 50°)	928 - 960 Tunable white 2800K - 6000K @90 CRI *(CRI 80 / 95 on request)	2P (2 poles track adapter) 3P (3 poles track adapter)

*For informational purposes only. Content is subject to change.

RECESSED DOWNLIGHT

RDE series



Connected by

WIZ

RDE series



Model No.	Ceiling cut-out (mm)	Outer diameter (mm)	Height (mm)	Max. wattage (W)	Lumen output (lm)*
RDE100	Ø100 - 105	Ø115	65	10W	570 - 660 lm
RDE125	Ø125 - 130	Ø140	80	20W	1130 - 1320 lm
RDE145	Ø145 - 150	Ø160	85	30W	1690 - 1980 lm
RDE180	Ø180 - 190	Ø198	98	30W	1740 - 2030 lm
RDE215	Ø215 - 220	Ø230	102	40W	2240 - 2620 lm

Lumen output with different wattage PSU (Power supply unit)

Model No.	10W (Xitanium 20W @0.25A)	15W (Xitanium 20W @0.35A)	20W (Xitanium 20W @0.5A)	30W (Xitanium 44W @0.7A)	40W (Xitanium 44W @1.05A)
RDE100	565 - 660 lm	N.A.	N.A.	N.A.	N.A.
RDE125	640 - 750 lm	750 - 875 lm	1130 - 1320 lm	N.A.	N.A.
RDE145	660 - 770 lm	765 - 890 lm	1235 - 1445 lm	1695 - 1980 lm	N.A.
RDE180	665 - 780 lm	770 - 895 lm	1240 - 1450 lm	1720 - 2035 lm	N.A.
RDE215	670 - 790 lm	780 - 900 lm	1270 - 1485 lm	1790 - 2095 lm	2240 - 2620 lm

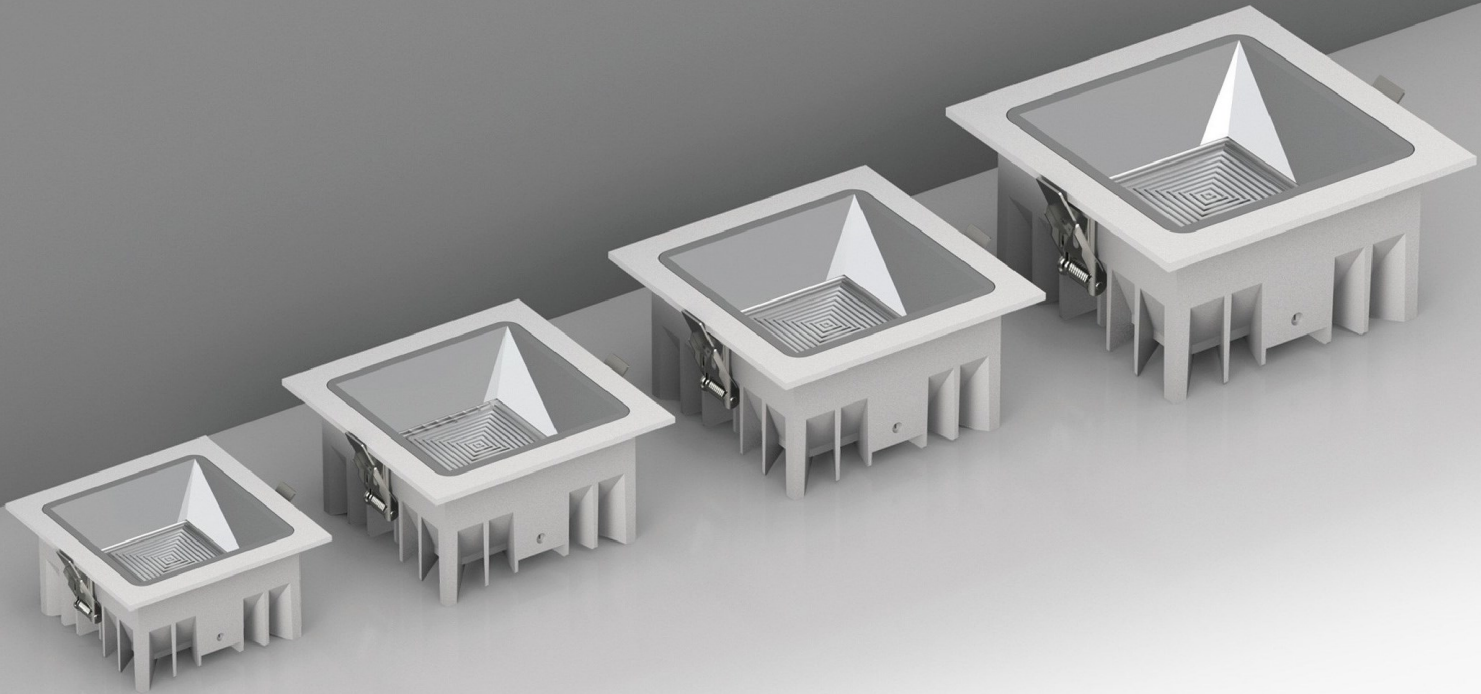
*Lumen output at CCT 2800K - 6000K. Data for reference only.

ORDERING INFORMATION

Example Model : RDE100-10-WT-SS-60D-928-960

Series	Ceiling cut-out	Wattage	Body colour	Reflector colour	Beam angle	CCT range
RDE	100 (Ø100-105mm)	10 (10W)	WT White	SS Specular Silver DG Dark Gold	60D (60°)	928 - 960 Tunable white 2800K - 6000K@90 CRI *(CRI 80 / 95 on request)
	125 (Ø125-130mm)	15 (15W)				
	145 (Ø145-150mm)	20 (20W)				
	180 (Ø180-190mm)	30 (30W)				
	215 (Ø215-220mm)	40 (40W)				

*For informational purposes only. Content is subject to change.



RDF series



Model No.	Ceiling cut-out (mm)	Outer dimension (mm)	Height (mm)	Max. wattage (W)	Lumen output (lm)*
RDF100	□100 - 105	□115	60	10W	565 - 660 lm
RDF125	□125 - 130	□140	75	20W	1130 - 1320 lm
RDF145	□145 - 140	□160	80	30W	1705 - 1995 lm
RDF180	□180 - 185	□198	95	40W	2220 - 2600 lm

Lumen output with different wattage PSU (Power supply unit)

Model No.	10W (Xitanium 20W @0.25A)	15W (Xitanium 20W @0.35A)	20W (Xitanium 20W @0.5A)	30W (Xitanium 44W @0.7A)	40W (Xitanium 44W @1.05A)
RDF100	565 - 660 lm	N.A.	N.A.	N.A.	N.A.
RDF125	640 - 750 lm	750 - 875 lm	1130 - 1320 lm	N.A.	N.A.
RDF145	660 - 775 lm	765 - 890 lm	1235 - 1445 lm	1705 - 1995 lm	N.A.
RDF180	670 - 785 lm	770 - 895 lm	1240 - 1450 lm	1720 - 2035 lm	2220 - 2600 lm

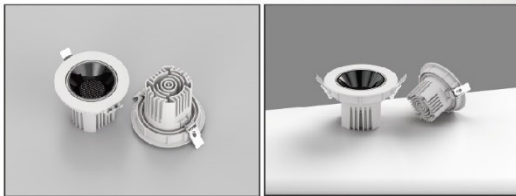
*Lumen output at CCT 2800K - 6000K. Data for reference only.

ORDERING INFORMATION

Example Model : RDF100-108-WT-SS-60D-928-960

RDF	100	-	10	-	WT	-	SS	-	60D	-	928 - 960
Series	Ceiling cut-out	-	Wattage	-	Body colour	-	Reflector colour	-	Beam angle	-	CCT range
RDF	100 (□100-105mm)		10 (10W)		WT White		SS Specular Silver		60D (60°)		928 - 960 Tunable white 2800K - 6000K@90 CRI *(CRI 80 / 95 on request)
	125 (□125-130mm)		15 (15W)								
	145 (□145-150mm)		20 (20W)				DG Dark Gold				
	180 (□180-190mm)		30 (30W)								
			40 (40W)								

*For informational purposes only. Content is subject to change.



Connected by

WIZ

Lighting Control System

RDT series (Fixed)



Model No.	Ceiling cut-out (mm)	Outer diameter (mm)	Height (mm)	Max. wattage (W)	Lumen output (lm)*
RDT75A	Ø75-80	Ø90	70	10W	500 - 585 lm
RDT95A	Ø95-100	Ø108	85	20W	1090 - 1280 lm
RDT125A	Ø125-130	Ø135	97	30W	1640 - 1920 lm

Lumen output with different wattage PSU (Power supply unit)

Model No.	10W (Xitanium 20W @0.25A)	15W (Xitanium 20W @0.35A)	20W (Xitanium 20W @0.5A)	30W (Xitanium 44W @0.7A)
RDT75A	500 - 585 lm	N.A.	N.A.	N.A.
RDT95A	620 - 727 lm	840 - 985 lm	1090 - 1280 lm	N.A.
RDT125A	640 - 750 lm	925 - 1080 lm	1200 - 1400 lm	1640 - 1920 lm

*Lumen output at CCT 2800K - 6000K. Data for reference only.

ORDERING INFORMATION

Example Model : RDT95A-20-WT-WT-38D-928-960

RDT	95A	-	10	-	WT	-	WT	-	38D	-	928 - 960
Series	Ceiling cut-out	-	Wattage	-	Body colour	-	Reflector colour	-	Beam angle	-	CCT range
RDT	75A (Ø75-80mm)		10 (10W)		WT White		WT White		15D (15°)		928 - 960 Tunable white 2800K - 6000K@90 CRI *(CRI 80 / 95 on request)
	95A (Ø95-100mm)		15 (15W)				BK Black		24D (24°)		
	125A (Ø125-130mm)		20 (20W)						38D (38°)		
			30 (30W)						60D (60°)		

*For informational purposes only. Content is subject to change.

RECESSED DOWNLIGHT
RDT-A series - P.27

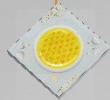
WALL WASHER DOWNLIGHT
RDT-C series - P.35



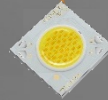
Fixed or Gimbal

Wall-washer

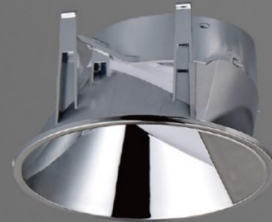
Dual colour
COB LED



Dual colour COB
LED



Lens with different beam angle



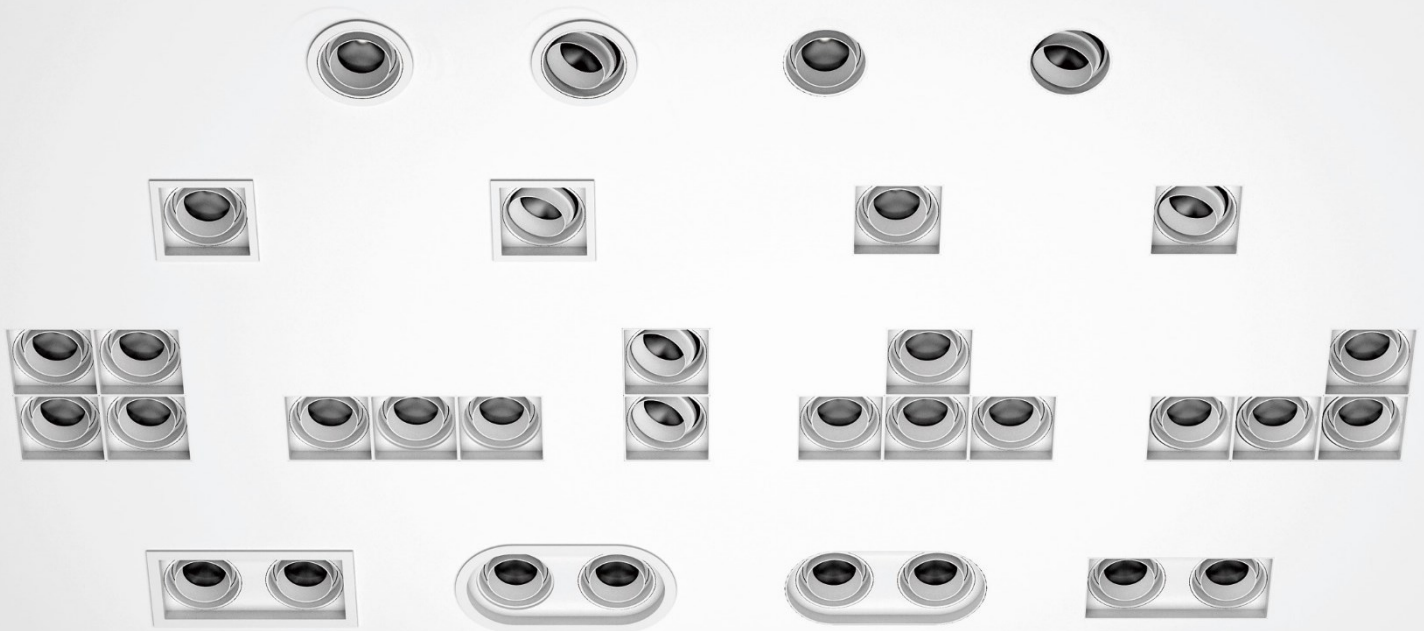
Polarized Specular
Reflector

Interchangeable
Reflector



GIMBAL DOWNLIGHT

RDS series



Connected by

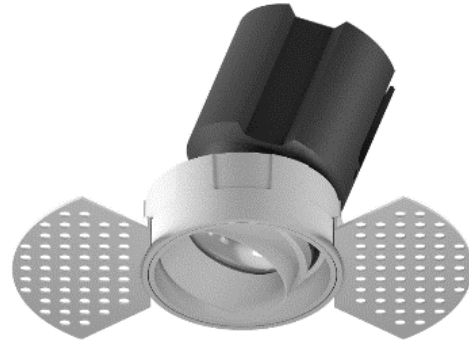
WIZ

GIMBAL DOWNLIGHT

RDS-1 series



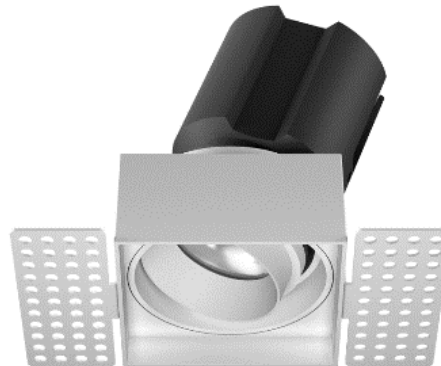
RDS-1RF



RDS-1RL



RDS-1QF



RDS-1QL

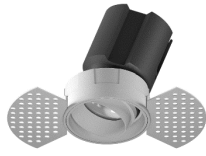
Connected by

WIZ

RDS-1RF / 1RL / 1QF / 1QL series



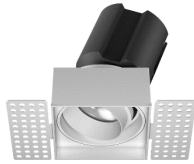
RDS-1RF



RDS-1RL



RDS-1QF



RDS-1QL

Model No.	Ceiling cut-out (mm)	Outer flange (mm)	Height (mm)	Max. wattage (W)	Lumen output (lm)*
RDS75-1RF	Ø75	Ø84	100	10W	500 - 590 lm
RDS95-1RF	Ø95	Ø110	128	20W	1130 - 1320 lm
RDS75-1RL	Ø77	N/A	100	10W	500 - 590 lm
RDS95-1RL	Ø97	N/A	128	20W	1130 - 1320 lm
RDS75-1QF	□75	□84.5	116	10W	500 - 590 lm
RDS95-1QF	□95	□104.5	144	20W	1130 - 1320 lm
RDS75-1QL	□77	N/A	116	10W	500 - 590 lm
RDS95-1QL	□97	N/A	144	20W	1130 - 1320 lm

ORDERING INFORMATION

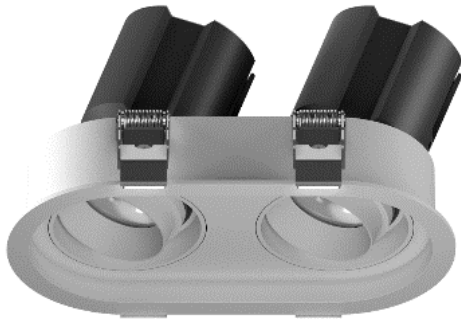
Example Model: RDS95-20-WT-WT-38D-928-960-1RF

LED Light-Engine Information										Mounting Information			
RDS	95	-	20	-	WT	-	WT	-	38D	-	928 - 960	-	1RF
Series	Light Engine Size	-	Wattage	-	Body colour	-	Reflector colour	-	Beam angle	-	CCT range	-	Mounting Type
RDS	75	-	10 (10W)		WT		WT		15D (15°)		928 - 960		1RF (1 light-engine, rounded mounting with flange)
	95	-	20 (20W)		White		White		24D (24°)		2800K-5700K @90 CRI		1RL (1 light-engine, rounded mounting with flangeless)
									38D (38°)		*(CRI 80 / 95 on request)		1QF (1 light-engine, square mounting with flange)
									60D (60°)				1QL (1 light-engine, square flangeless mounting)

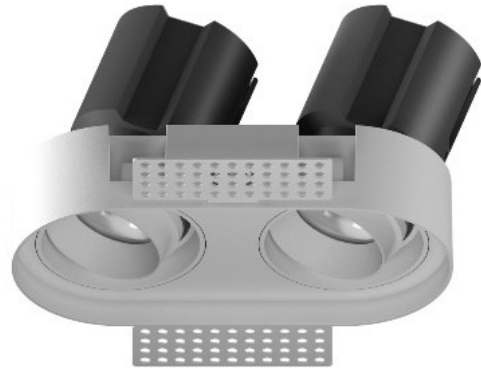
*For informational purposes only. Content is subject to change.

GIMBAL DOWNLIGHT

RDS-2 series



RDS-2RF



RDS-2RL



RDS-2QF



RDS-2QL

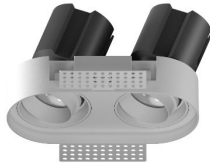
Connected by

WIZ

RDS-2RF / 2RL / 2QF / 2QL series



RDS-2RF



RDS-2RL



RDS-2QF



RDS-2QL

Model No.	Ceiling cut-out (mm)	Outer flange (mm)	Height (mm)	Max. wattage (W)	Lumen output (lm)*
RDS75-2RF	177.5 x 88	193.8 x 104.3	112	2 x 10W	1000 - 1180 lm
RDS95-2RF	223 x 109	238.5 x 124.5	139	2 x 20W	2260 - 2640 lm
RDS75-2RL	180 x 90.5	N/A	112	2 x 10W	1000 - 1180 lm
RDS95-2RL	225 x 111	N/A	139	2 x 20W	2260 - 2640 lm
RDS75-2QF	164 x 77	180 x 90.5	112	2 x 10W	1000 - 1180 lm
RDS95-2QF	207 x 95	223.5 x 109.5	139	2 x 20W	2260 - 2640 lm
RDS75-2QL	166.5 x 79.5	N/A	112	2 x 10W	1000 - 1180 lm
RDS95-2QL	209 x 97	N/A	139	2 x 20W	2260 - 2640 lm

ORDERING INFORMATION

Example Model : RDS95-20-WT-WT-38D-928-960-2RF

LED Light-Engine Information									Mounting Information				
RDS	95	-	13	-	WT	-	WT	-	38D	-	928 - 960	-	2RF
Series	Light Engine	-	Wattage	-	Body colour	-	Reflector colour	-	Beam angle	-	CCT range	-	Mounting Type
RDS	75	-	10 (10W)		WT		WT		15D (15°)		928 - 960		2RF (2 light-engine, rounded mounting with flange)
	95	-	20 (20W)		White		White		24D (24°)		2800K-5700K @90 CRI		2RL (2 light-engine, rounded mounting with flangeless)
									38D (38°)		*(CRI 80 / 95 on request)		2QF (2 light-engine, square mounting with flange)
									60D (60°)				2QL (2 light-engine, square flangeless mounting)

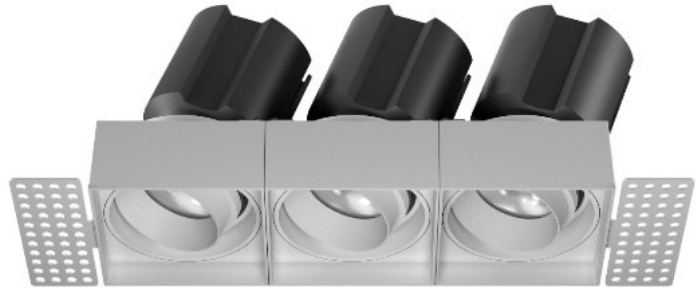
*For informational purposes only. Content is subject to change.

GIMBAL DOWNLIGHT

RDS-3 / RDS-4 series



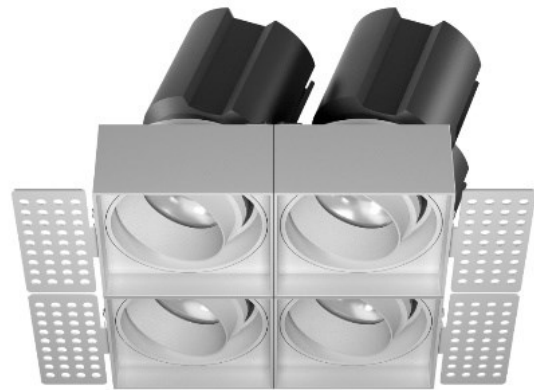
RDS-3RF



RDS-3RL



RDS-4QF



RDS-4QL

Connected by

WIZ

RDS-3QF / 3QL / 4QF / 4QL series



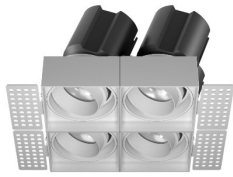
RDS-3QF



RDS-3QL



RDS-4QF



RDS-4QL

Model No.	Ceiling cut-out (mm)	Outer flange (mm)	Height (mm) 高度	Max. wattage (W) 最大瓦數	Lumen output (lm)* 輸出流明
RDS75-3QF	222 x 75	231.5 x 84.5	112	3 x 10W	1500 - 1770 lm
RDS95-3QF	284 x 95	293.5 x 104.5	143	3 x 20W	3390 - 3960 lm
RDS75-3QL	224.5 x 77	N/A	112	3 x 10W	1500 - 1770 lm
RDS95-3QL	287 x 97	N/A	143	3 x 20W	3390 - 3960 lm
RDS75-4QF	□150	□158	112	4 x 10W	2000 - 2360 lm
RDS95-4QF	□190	□198	143	4 x 20W	4520 - 5280 lm
RDS75-4QL	□152.5	N/A	112	4 x 10W	2000 - 2360 lm
RDS95-4QL	□192	N/A	143	4 x 20W	4520 - 5280 lm

ORDERING INFORMATION

Example Model : RDS95-20-WT-WT-38D-928-960-3RF

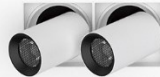
LED Light-Engine Information										Mounting Information			
RDS	95	-	20	-	WT	-	WT	-	38D	-	928 - 960	-	3RF
Series	Light Engine	-	Wattage	-	Body colour	-	Reflector colour	-	Beam angle	-	CCT range		Mounting Type
RDS	75	-	10 (10W)		WT White		WT White		15D (15°) 24D (24°) 38D (38°) 60D (60°)		928 - 960 2800K-5700K @90 CRI *(CRI 80 / 95 on request)		3QF (3 light-engines, rounded mounting with flange) 3QL (3 light-engine, rounded mounting with flangeless) 4QF (4 light-engines, rounded mounting with flange) 4QL (4 light-engine, rounded mounting with flangeless)

*For informational purposes only. Content is subject to change.



GIMBAL DOWNLIGHT (EXTENDABLE)

RDV series



Connected by

WIZ



RDV-1RF



RDV-1RL



RDV-1QF



RDV-1QL

RDV-1RF / 1RL / 1QF / 1QL series



RDV-1RF



RDV-1RL



RDV-1QF



RDV-1QL

Model No.	Ceiling cut-out (mm)	Outer flange (mm)	Height (mm)	Max. wattage (W)	Lumen output (lm)*
RDV75-1RF	∅75	∅84	104	10W	500 - 590 lm
RDV95-1RF	∅95	∅110	127	20W	1130 - 1320 lm
RDV75-1RL	∅77	N/A	104	10W	500 - 590 lm
RDV95-1RL	∅97	N/A	127	20W	1130 - 1320 lm
RDV75-1QF	□75	□84.5	116	10W	500 - 590 lm
RDV95-1QF	□95	□104.5	144	20W	1130 - 1320 lm
RDV75-1QL	□77	N/A	116	10W	500 - 590 lm
RDV95-1QL	□97	N/A	144	20W	1130 - 1320 lm

ORDERING INFORMATION

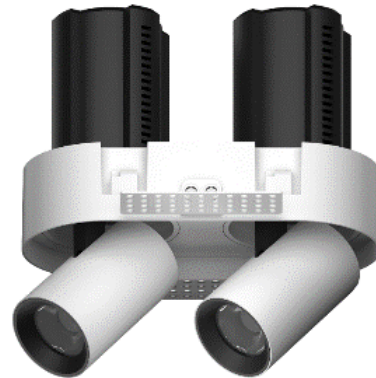
Example Model : RDV95-20-WT-WT-38D-928-960-1RF

LED Light-Engine Information										Mounting Information			
RDV	95	-	20	-	WT	-	WT	-	38D	-	928 - 960	-	1RF
Series	Light Engine	-	Wattage	-	Body colour	-	Reflector colour	-	Beam angle	-	CCT range	-	Mounting Type
RDV	75 95	- -	10 (10W) 20 (20W)		WT White		WT White		15D (15°) 24D (24°) 38D (38°) 60D (60°)		928 - 960 2800K-5700K @90 CRI *(CRI 80 / 95 on request)		1RF (1 light-engine, rounded mounting with flange) 1RL (1 light-engine, rounded mounting with flangeless) 1QF (1 light-engine, square mounting with flange) 1QL (1 light-engine, square flangeless mounting)

*For informational purposes only. Content is subject to change.



RDV-2RF



RDV-2RL



RDV-2QF



RDV-2QL

RDV-2RF / 2RL / 2QF / 2QL series



RDV-2RF



RDV-2RL



RDV-2QF



RDV-2QL

Model No.	Ceiling cut-out (mm)	Outer flange (mm)	Height (mm)	Max. wattage (W)	Lumen output (lm)*
RDV75-2RF	177.5 x 88	193.8 x 104.3	116	2 x 10W	1000 - 1180 lm
RDV95-2RF	223 x 109	238.5 x 124.5	144	2 x 20W	2260 - 2640 lm
RDV75-2RL	180 x 90.5	N/A	116	2 x 10W	1000 - 1180 lm
RDV95-2RL	225 x 111	N/A	144	2 x 20W	2260 - 2640 lm
RDV75-2QF	164 x 77	180 x 90.5	116	2 x 10W	1000 - 1180 lm
RDV95-2QF	207 x 95	223.5 x 109.5	144	2 x 20W	2260 - 2640 lm
RDV75-2QL	166.5 x 79.5	N/A	116	2 x 10W	1000 - 1180 lm
RDV95-2QL	209 x 97	N/A	144	2 x 20W	2260 - 2640 lm

ORDERING INFORMATION

Example Model : RDV95-20-WT-WT-38D-928-960-2RF

LED Light-Engine Information										Mounting Information			
RDV	95	-	20	-	WT	-	WT	-	38D	-	928 - 960	-	2RF
Series	Light Engine	-	Wattage	-	Body colour	-	Reflector colour	-	Beam angle	-	CCT range	-	Mounting Type
RDV	75 95	- -	10 (10W) 20 (20W)		WT White		WT White		15D (15°) 24D (24°) 38D (38°) 60D (60°)		928 - 960 2800K-5700K @90 CRI *(CRI 80 / 95 on request)		2RF (2 light-engine, rounded mounting with flange) 2RL (2 light-engine, rounded mounting with flangeless) 2QF (2 light-engine, square mounting with flange) 2QL (2 light-engine, square flangeless mounting)

*For informational purposes only. Content is subject to change.

GIMBAL DOWNLIGHT (EXTENDABLE)

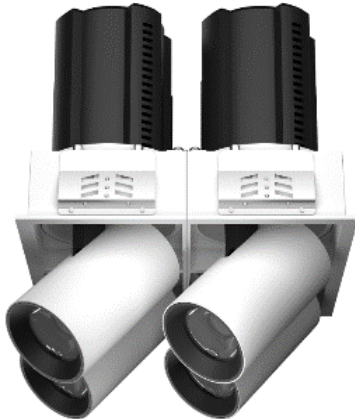
RDV-3 / RDV-4 series



RDV-3RF



RDV-3RL



RDV-4QF



RDV-4QL

Connected by

WIZ

RDV-3QF / 3QL / 4QF / 4QL series



RDV-3QF



RDV-3QL



RDV-4QF



RDV-4QL

Model No.	Ceiling cut-out (mm)	Outer flange (mm)	Height (mm)	Max. wattage (W)	Lumen output (lm)*
RDV75-3QF	222 x 75	231.5 x 84.5	116	3 x 10W	1500 - 1770 lm
RDV95-3QF	284 x 95	293.5 x 104.5	144	3 x 20W	3390 - 3960 lm
RDV75-3QL	224.5 x 77	N/A	116	3 x 10W	1500 - 1770 lm
RDV95-3QL	287 x 97	N/A	144	3 x 20W	3390 - 3960 lm
RDV75-4QF	□150	□158	116	4 x 10W	2000 - 2360 lm
RDV95-4QF	□190	□198	144	4 x 20W	4520 - 5280 lm
RDV75-4QL	□152.5	N/A	116	4 x 10W	2000 - 2360 lm
RDV95-4QL	□192	N/A	144	4 x 20W	4520 - 5280 lm

ORDERING INFORMATION

Example Model : RDV95-20-WT-WT-38D-928-960-3RF

LED Light-Engine Information										Mounting Information			
RDV	95	-	13	-	WT	-	WT	-	38D	-	928 - 960	-	3RF
Series	Light Engine	-	Wattage	-	Body colour	-	Reflector colour	-	Beam angle	-	CCT range	-	Mounting Type
RDV	75	-	10 (10W)		WT		WT		15D (15°)		928 - 960		3QF (3 light-engines, rounded mounting with flange)
	95	-	20 (20W)		White		White		24D (24°)		2800K-5700K @90 CRI		3QL (3 light-engine, rounded mounting with flangeless)
									38D (38°)		*(CRI 80 / 95 on request)		4QF (4 light-engines, rounded mounting with flange)
									60D (60°)				4QL (4 light-engine, rounded mounting with flangeless)

*For informational purposes only. Content is subject to change.



RDJ series



Model No.	Ceiling cut-out (mm)	Outer diameter (mm)	Height (mm)	Max. wattage (W)	Lumen output (lm)*
RDJ100	Ø100 - 105	Ø114	80	10W	505 - 590 lm
RDJ125	Ø125 - 130	Ø138	120	20W	735 - 860 lm
RDJ150	Ø150 - 155	Ø165	145	30W	1640 - 1920 lm

Lumen output with different wattage PSU (Power supply unit)

Model No.	10W (Xitanium 13W @0.25A)	15W (Xitanium 20W @0.35A)	20W (Xitanium 20W @0.5A)	30W (Xitanium 44W @0.7A)
RDJ100	630 - 740 lm	N.A.	N.A.	N.A.
RDJ125	660 - 770 lm	940 - 1100 lm	1220 - 1430 lm	N.A.
RDJ150	665 - 775 lm.	945 - 1105 lm	1270 - 1485 lm	1640 - 1920 lm

*Lumen output at CCT 2800K - 6000K. Data for reference only.

ORDERING INFORMATION

Example Model : RDJ100-10-WT-WT-38D-928-960

Series	Ceiling cut-out	Wattage	Body colour	Reflector colour	Beam angle	CCT range
RDJ	100 (Ø100-105mm)	10 (10W)	WT White	WT White	15D (15°)	928 - 960
	125 (Ø125-130mm)	15 (15W)			23D (23°)	2800K - 6000K@90 CRI *(CRI 80 / 95 on request)
	150 (Ø150-155mm)	20 (20W)			38D (38°)	
		30 (30W)				

*For informational purposes only. Content is subject to change.



RDT series



Model No.	Ceiling cut-out (mm)	Outer diameter (mm)	Height (mm)	Max. wattage (W)	Lumen output (lm)*
RDT125B	Ø125 - 130	Ø138	85	20W	1090 - 1280 lm
RDT150B	Ø150 - 155	Ø163	97	30W	1640 - 1920 lm

Lumen output with different wattage PSU (Power supply unit)

Model No.	10W (Xitanium 13W @0.25A)	15W (Xitanium 20W @0.35A)	20W (Xitanium 20W @0.5A)	30W (Xitanium 44W @0.7A)
RDT125B	495 - 580 lm	750 - 900 lm	1090 - 1280 lm	N.A.
RDT150B	520 - 605 lm	780 - 930 lm	1115 - 1300 lm	1640 - 1920 lm

*Lumen output at CCT 2800K - 6000K. Data for reference only.

ORDERING INFORMATION

Example Model : RDT150-20-WT-WT-38D-928-960

RDT	150	-	13	-	WT	-	WT	-	38D	-	928 - 960
Series	Ceiling cut-out	-	Wattage	-	Body colour	-	Reflector colour	-	Beam angle	-	CCT range
RDT	125B (Ø125-130mm) 150B (Ø150-155mm)		10 (10W) 15 (15W) 20 (20W) 30 (30W)		WT White		WT White BK Black		15D (15°) 24D (24°) 38D (38°) 60D (60°)		928 - 960 2800K - 6000K@90 CRI *(CRI 80 / 95 on request)

*For informational purposes only. Content is subject to change.

WALL WASHER DOWN LIGHT

RDT-C series



Connected by

WIZ

RDT-C series



Model No.	Ceiling cut-out (mm) 開孔直徑	Outer diameter (mm) 外徑	Height (mm) 高度	Max. wattage (W) 最大瓦數	Lumen output (lm)* 輸出流明
RDT75C	Ø75 - 80	Ø90	70	10W	400 - 570 lm
RDT95C	Ø95 - 100	Ø108	85	20W	710 - 830 lm
RDT125C	Ø125 - 130	Ø135	97	30W	1640 - 1920 lm

Lumen output with different wattage PSU (Power supply unit)

Model No.	10W (Xitanium 13W @0.25A)	15W (Xitanium 20W @0.35A)	20W (Xitanium 20W @0.5A)	30W (Xitanium 44W @0.7A)
RDT75C	470 - 540 lm	N.A.	N.A.	
RDT95C	495 - 580 lm	750 - 900 lm	1090 - 1280 lm	N.A.
RDT125C	525 - 605 lm	780 - 930 lm	1115 - 1300 lm	1640 - 1920 lm

*Lumen output at CCT 2800K - 6000K. Data for reference only.

ORDERING INFORMATION

Example Model : RDT95C-20-WT-SS-38D-928-960

RDT	95	-	20	-	WT	-	WT	-	38D	-	928 - 960
Series	Ceiling cut-out	-	Wattage	-	Body colour	-	Reflector colour	-	Beam angle	-	CCT range
RDT	75C (Ø75-80mm)		10 (10W)		WT		SS		15D (15°)		928 - 960 2800K - 6000K@90 CRI *(CRI 80 / 95 on request)
	95C (Ø95-100mm)		15 (15W)		White		Specular Silver		24D (24°)		
	125C (Ø125-130mm)		20 (20W)						38D (38°)		
			30 (30W)						60D (60°) (All asymmetric 10°)		

*For informational purposes only. Content is subject to change.



WALL WASHER DOWNLIGHT

RDW series



Connected by

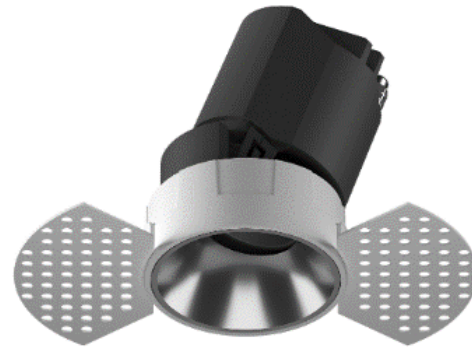
WiZ

WALL WASHER DOWNLIGHT

RDW-1 series



RDW-1RF



RDW-1RL



RDW-1QF



RDW-1QL

Connected by

WIZ

RDW-1RF / 1RL / 1QF / 1QL series



RDW-1RF



RDW-1RL



RDW-1QF



RDW-1QL

Model No.	Ceiling cut-out (mm)	Outer flange (mm)	Height (mm)	Max. wattage (W)	Lumen output (lm)*
RDW75-1RF	Ø75	Ø84	112	10W	500 - 590 lm
RDW95-1RF	Ø95	Ø110	138	20W	1130 - 1320 lm
RDW75-1RL	Ø77	N/A	112	10W	500 - 590 lm
RDW95-1RL	Ø97	N/A	138	20W	1130 - 1320 lm
RDW75-1QF	Ø75	Ø84	101	10W	500 - 590 lm
RDW95-1QF	Ø95	Ø110	122	20W	1130 - 1320 lm
RDW75-1QL	Ø77	N/A	101	10W	500 - 590 lm
RDW95-1QL	Ø97	N/A	122	20W	1130 - 1320 lm

ORDERING INFORMATION

Example Model : RDW95-20-WT-WT-38D-928-960-1RF

LED Light-Engine Information										Mounting Information			
RDW	95	-	20	-	WT	-	WT	-	38D	-	928 - 960	-	1RF
Series	Light Engine	-	Wattage	-	Body colour	-	Reflector colour	-	Beam angle	-	CCT range	-	Mounting Type
RDW	75	-	10 (10W)		WT White		WT White		15D (15°) 24D (24°) 38D (38°) 60D (60°)		928 - 960 2800K - 6000K @90 CRI *(CRI 80 / 95 on request)		1RF (1 light-engine, rounded mounting with flange) 1RL (1 light-engine, rounded mounting with flangeless) 1QF (1 light-engine, square mounting with flange) 1QL (1 light-engine, square flangeless mounting)

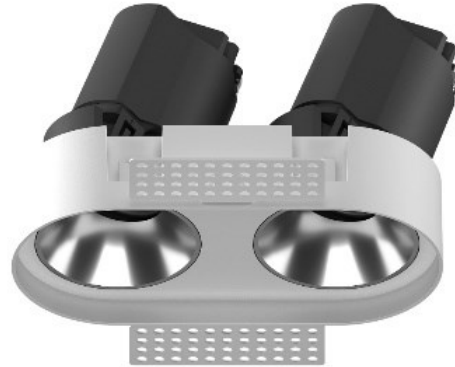
*For informational purposes only. Content is subject to change.

WALL WASHER DOWNLIGHT

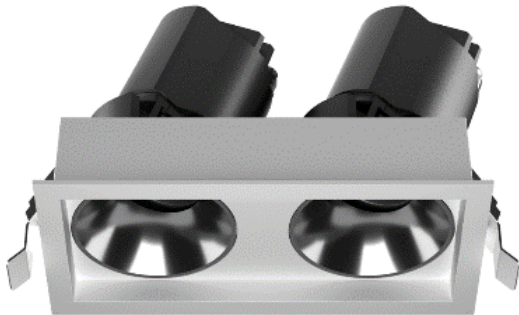
RDW-2 series



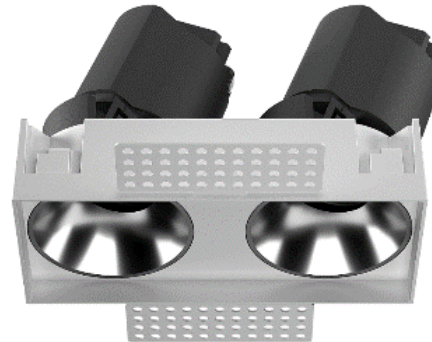
RDW-2RF



RDW-2RL



RDW-2QF



RDW-2QL

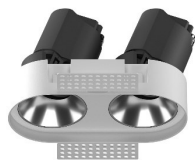
Connected by

WIZ

RDW-2RF / 2RL / 2QF / 2QL series



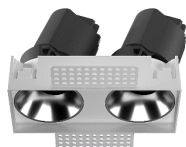
RDW-2RF



RDW-2RL



RDW-2QF



RDW-2QL

Model No.	Ceiling cut-out (mm)	Outer flange (mm)	Height (mm)	Max. wattage (W)	Lumen output (lm)*
RDW75-2RF	177.5 x 88	193.8 x 104.3	112	2 x 10W	1000 - 1180 lm
RDW95-2RF	223 x 109	238.5 x 124.5	134	2 x 20W	2260 - 2640 lm
RDW75-2RL	180 x 90.5	N/A	112	2 x 10W	1000 - 1180 lm
RDW95-2RL	225 x 111	N/A	134	2 x 20W	2260 - 2640 lm
RDW75-2QF	164 x 77	180 x 90.5	112	2 x 10W	1000 - 1180 lm
RDW95-2QF	207 x 95	223.5 x 109.5	134	2 x 20W	2260 - 2640 lm
RDW75-2QL	177.5 x 88	N/A	112	2 x 10W	1000 - 1180 lm
RDW95-2QL	223 x 109	N/A	134	2 x 20W	2260 - 2640 lm

ORDERING INFORMATION

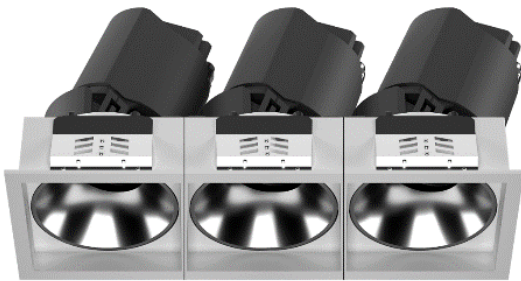
Example Model : RDW95-20-WT-WT-38D-928-960-2RF

LED Light-Engine Information										Mounting Information			
RDW	95	-	13	-	WT	-	WT	-	38D	-	928 - 960	-	2RF
Series	Light Engine	-	Wattage	-	Body colour	-	Reflector colour	-	Beam angle	-	CCT range	-	Mounting Type
RDW	75	-	10 (10W)		WT White		WT White		15D (15°) 24D (24°) 38D (38°) 60D (60°)		928 - 960 2800K-5700K @90 CRI *(CRI 80 / 95 on request)		2RF (2 light-engine, rounded mounting with flange) 2RL (2 light-engine, rounded mounting with flangeless) 2QF (2 light-engine, square mounting with flange) 2QL (2 light-engine, square flangeless mounting)

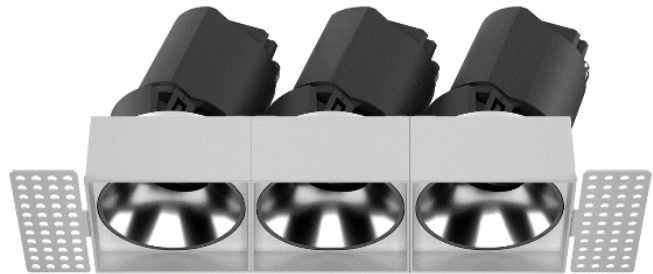
*For informational purposes only. Content is subject to change.

WALL WASHER DOWNLIGHT

RDW-3 / RDW-4 series



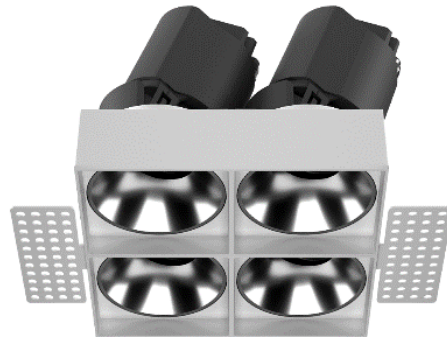
RDW-3QF



RDW-3QL



RDW-4QF



RDW-4QL

Connected by

WIZ

RDW-3QF / 3QL / 4QF / 4QL series



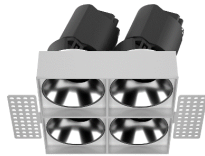
RDW-3QF



RDW-3QL



RDW-4QF



RDW-4QL

Model No.	Ceiling cut-out (mm)	Outer flange (mm)	Height (mm)	Max. wattage (W)	Lumen output (lm)*
RDW75-3QF	222 x 75	231.5 x 84.5	112	3 x 10W	1500 - 1770 lm
RDW95-3QF	284 x 95	293.5 x 104.5	138	3 x 20W	3390 - 3960 lm
RDW75-3QL	224.5 x 77	N/A	112	3 x 10W	1500 - 1770 lm
RDW95-3QL	287 x 97	N/A	138	3 x 20W	3390 - 3960 lm
RDW75-4QF	□150	□158	112	4 x 10W	2000 - 2360 lm
RDW95-4QF	□190	□198	138	4 x 20W	4520 - 5280 lm
RDW75-4QL	□152.5	N/A	112	4 x 10W	2000 - 2360 lm
RDW95-4QL	□192	N/A	138	4 x 20W	4520 - 5280 lm

ORDERING INFORMATION

Example Model : RDW95-20-WT-WT-38D-928-960-3RF

LED Light-Engine Information										Mounting Information			
RDW	95	-	20	-	WT	-	WT	-	38D	-	928 - 960	-	3RF
Series	Light Engine	-	Wattage	-	Body colour	-	Reflector colour	-	Beam angle	-	CCT range		Mounting Type
RDW	75	-	10 (10W)		WT White		WT White		15D (15°) 24D (24°) 38D (38°) 60D (60°)		928 - 960 2800K-5700K @90 CRI *(CRI 80 / 95 on request)		3QF (3 light-engines, rounded mounting with flange) 3QL (3 light-engine, rounded mounting with flangeless) 4QF (4 light-engines, rounded mounting with flange) 4QL (4 light-engine, rounded mounting with flangeless)

*For informational purposes only. Content is subject to change.



SMR series



Model No.	Ceiling cut-out (mm)	Outer diameter (mm)	Height (mm)	Rated wattage (W)	Lumen output (lm)*
SMR130	N/A	Ø172	155	20W	1130 - 1320 lm
SMR170	N/A	Ø170	192	30W	1695 - 1980 lm
SMR195	N/A	Ø195	200	40W	2240 - 2620 lm

*Lumen output at CCT2800K - 60700K. Data for reference only.

Lumen output with different wattage PSU (Power supply unit)

Model No.	15W (Xitanium 20W @0.25A)	20W (Xitanium 20W @0.35A)	30W (Xitanium 44W @0.7A)	40W (Xitanium 44W @1.05A)
SMR130	750 - 875 lm	1130 - 1320 lm	N.A.	N.A.
SMR170	765 - 890 lm	1235 - 1445 lm	1695 - 1980 lm	N.A.
SMR195	780 - 900 lm	1270 - 1485 lm	1790 - 2095 lm	2240 - 2620 lm

*Lumen output at CCT 2800K - 6000K. Data for reference only.

ORDERING INFORMATION

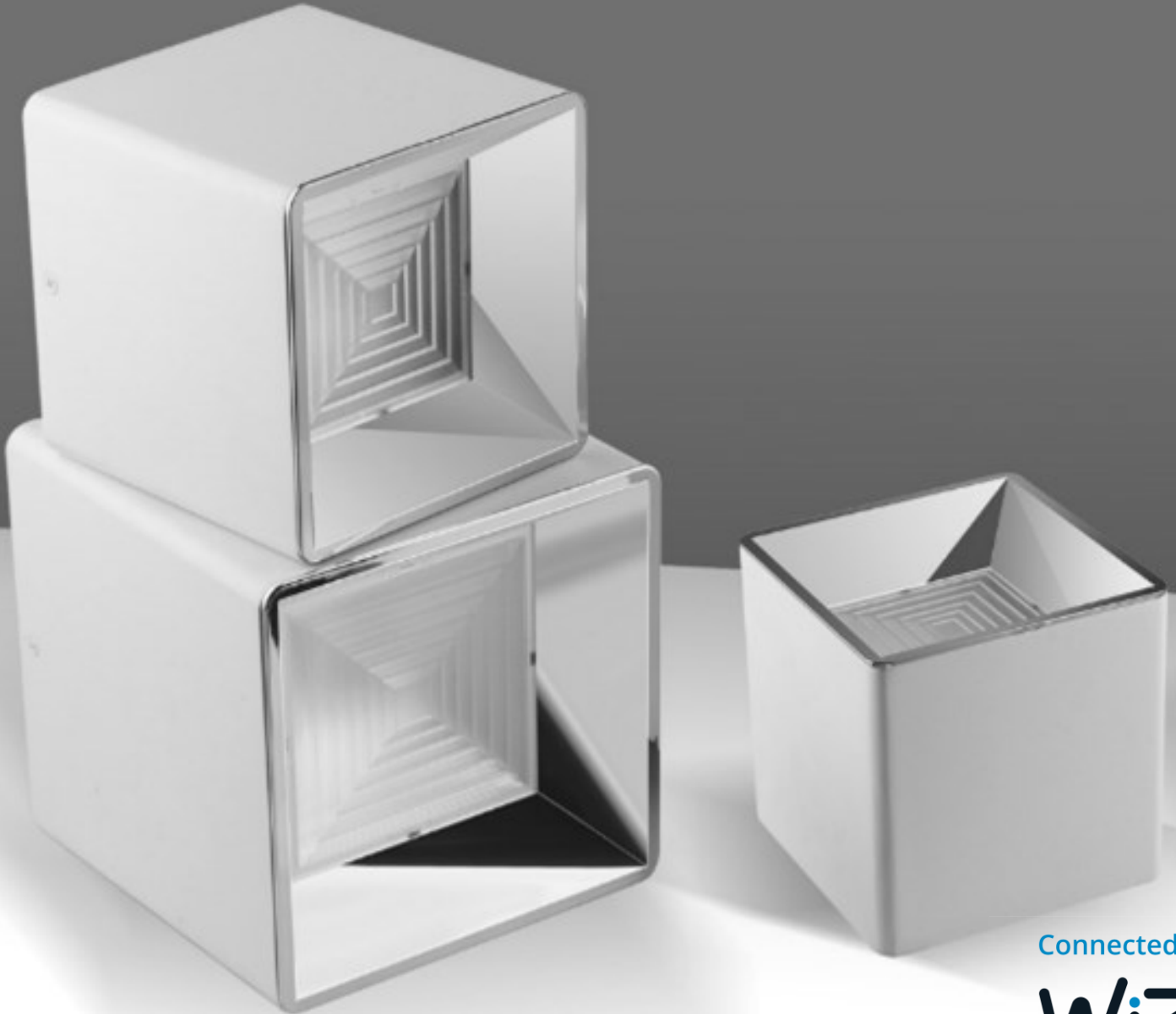
Example Model : SMR110-10-WT-SS-60D-928-960

SMR	110	-	10	-	WT	-	SS	-	60D	-	928 - 960
Series	Diameter	-	Wattage	-	Body colour	-	Reflector colour	-	Beam angle	-	CCT range
SMR	130 (Ø132mm) 170 (Ø170mm) 195 (Ø195mm)		20 (Max.20W) 30 (Max.30W) 40 (Max. 40W)		WT White BK Black		SS Specular Silver DG Dark Gold		60D (60°)		928 - 960 2800K - 6000K@90 CRI *(CRI 80 / 95 on request)

*For informational purposes only. Content is subject to change.

SURFACE MOUNT DOWN LIGHT

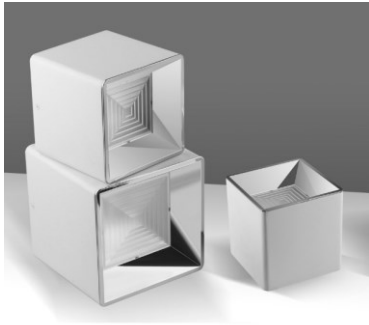
SMT series



Connected by

WIZ

SMT series



Model No.	Ceiling cut-out (mm)	Outer dimension (mm)	Height (mm)	Max. wattage (W)	Lumen output (lm)*
SMT110	N/A	□110	120	20W	1130 - 1320 lm
SMT130	N/A	□130	135	30W	1640 - 1920 lm
SMT160	N/A	□160	165	40W	2260 - 2640 lm

*Lumen output at CCT2800K - 6000K. Data for reference only.

Lumen output with different wattage PSU (Power supply unit)

Model No.	15W (Xitanium 20W @0.25A)	20W (Xitanium 20W @0.35A)	30W (Xitanium 44W @0.7A)	40W (Xitanium 44W @1.05A)
SMT110	750 - 875 lm	1130 - 1320 lm	N.A.	N.A.
SMT130	765 - 890 lm	1235 - 1445 lm	1640 - 1920 lm	N.A.
SMT165	780 - 900 lm	1270 - 1485 lm	1790 - 2095 lm	2240 - 2620 lm

*Lumen output at CCT 2800K - 6000K. Data for reference only.

ORDERING INFORMATION

Example Model : SMR100-10-WT-SS-60D-928-960

SMT	110	-	10	-	WT	-	SS	-	60D	-	928 - 960
Series	Ceiling cut-out	-	Wattage	-	Body colour	-	Reflector colour	-	Beam angle	-	CCT range
SMT	110 (∅110mm)		20 (Max.20W)		WT White		SS Specular Silver		60D (60°)		928 - 960 2800K - 6000K@90 CRI *(CRI 80 / 95 on request)
	130 (∅130mm)		30 (Max.30W)		BK Black		DG Dark Gold				
	160 (∅170mm)		40 (Max. 40W)								

*For informational purposes only. Content is subject to change.

Transformer and luminaries PSU

Luminaries PSU - WiZ Pro LED Drivers



Xitanium 10W/13W/20W



Xitanium 44W

Product name	Rated Input Power	Input Voltage	Output Voltage	Output current	Dimensions (L)x(W)x(H)mm
Xitanium 10W 0.15/0.2A 42V WiZ TW 230V	10.5W	AC 220 - 240V	DC 30 - 42V	150 / 200mA	115 x 45 x 29mm
Xitanium 13W 0.25/0.3A 42V WiZ TW 230V	15.5W	AC 220 - 240V	DC 30 - 42V	250 / 300mA	115 x 45 x 29mm
Xitanium 20W 0.35/0.5A 40V WiZ TW 230V	20W	AC 220 - 240V	DC 30 - 40V	350 / 500mA	115 x 45 x 29mm
Xitanium 44W 0.7-1.05A 42V WIZ TW 230V	51.2W	AC 220 - 240V	DC 30 - 42V	700 / 800 / 900 / 1050mA	108 x 68 x 32mm

Wireless Panel (Wall Dimmer)

WiZ Pro Wireless Panel



WiZ Pro Wireless Panel AC – Grey



WiZ Pro Wireless Panel DC – Grey



WiZ Pro Wireless Panel RB – Grey



WiZ Pro Wireless Panel AC – White



WiZ Pro Wireless Panel DC – White

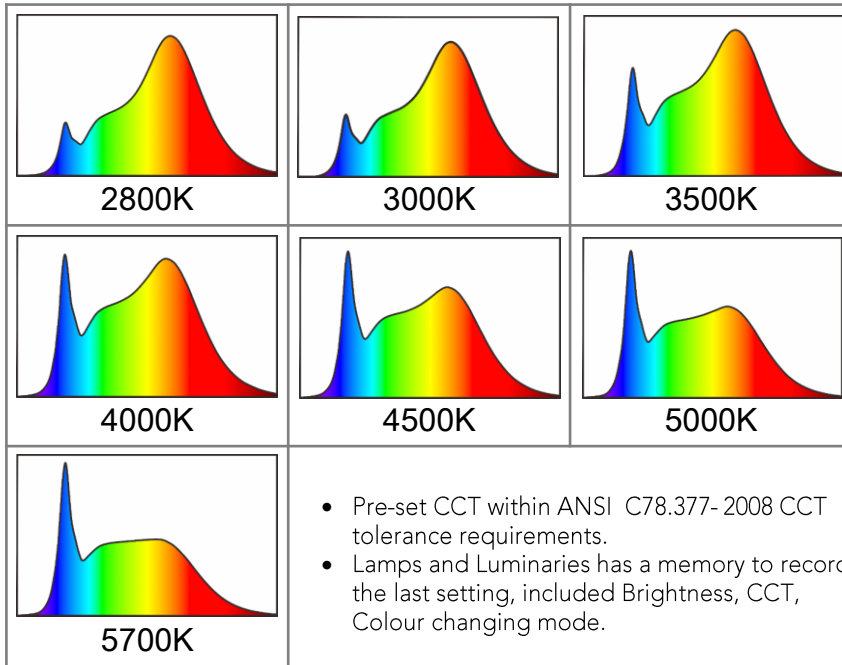


WiZ Pro Wireless Panel RB – White

Product name	Power supply input	Battery life	Dimensions (L)x(W)x(H)mm
WiZ Pro Wireless Panel AC – (Grey / White)	220V - 240V AC input	N/A	86 x 86 x 41.8mm
WiZ Pro Wireless Panel DC – (Grey / White)	CR123A battery	720 days*	86 x 86 x 41.8mm
WiZ Pro Wireless Panel RB – (Grey / White)	Lithium ion 3.7V rechargeable battery	150 days*	86 x 86 x 41.8mm

* @Press keypad 30 times a day

CCT and Spectral Power Distribution



- Pre-set CCT within ANSI C78.377-2008 CCT tolerance requirements.
- Lamps and Luminaires has a memory to record the last setting, included Brightness, CCT, Colour changing mode.



Table 1 - Nominal CCT Categories

Nominal CCT ¹⁾	Target CCT and tolerance (K)	Target Duv and tolerance	
2700 K	2725 ± 145	0.000	± 0.006
3000 K	3045 ± 175	0.000	± 0.006
3500 K	3465 ± 245	0.000	± 0.006
4000 K	3985 ± 275	0.001	± 0.006
4500 K	4503 ± 243	0.001	± 0.006
5000 K	5028 ± 283	0.002	± 0.006
5700 K	5665 ± 355	0.002	± 0.006
6500 K	6530 ± 510	0.003	± 0.006
Flexible CCT (2700 - 6500 K)	$T^{2)}$ ± $\Delta T^{3)}$	$D_{uv}^{4)}$	± 0.006



APPLICATIONS

- Residential: Accent lighting, Dining Room, Study Room
- Office: Reception area, Meeting room, Corridors, Common area
- Retail: Fashion boutique, Cosmetics, Jewellery, Fresh food, Concept stores, Supermarket, Florist shop
- Restaurant: Fine-dining, bars, cafés, fast food
- Hospitality: Hotel lobby, Corridors, Stairwell, Wellbeing room, Restroom
- Health Care: Elderly home, hospital
- Display: Galleries, museums, exhibitions, windows display
- Specialty : Aquarium, houseplant growing

